



Working Instruction, Mechanical

Applicable for T700

CONTENTS

1	Introduction	3
1.1	Equipment	4
1.2	General cautions	5
1.3	Adhesives	5
2	Disassembly	6
2.1	Overview	6
2.1.1	Cover Battery Sub Assembly & Battery	7
2.1.2	Front Assembly	8
2.1.3	Cover Rear Sub Assembly	10
2.1.4	Ant Main PIFA	12
2.1.5	Frame PWB Sub Assembly	13
2.1.6	Camera Flex Module	14
2.1.7	Display 2,02A-SI TFT	16
2.1.8	Key Flex Module & Frame Sub Assembly PWB	17
3	Replacements	19
3.1	Cover Battery Sub Assembly & Battery	20
3.2	Front Assembly	20
3.3	Cover Rear Sub Assembly	20
3.4	Ant Main PIFA	20
3.5	Camera Flex Module	20
3.6	Display 2,02 A-SI TFT	20
3.7	Key Flex Module	20
3.8	Frame PWB Sub Assembly	20
3.9	Cap Screw	21
3.10	Screw Other Len:5.0 Diam:1.7	21
3.11	Screw Other Len:3.5 Diam:1.4 M	21
3.12	Cap Grommet CamR	21
3.13	Frame Camera Sub Assembly	21
3.14	SIM/M2 Flex Module	21
3.15	Camera 3 MPixel CMOS	22
3.16	Keyboard	27
3.17	Key Volume	28
3.18	Key Camera	29
3.19	KRH-Label	30
3.20	Co-branding Generic	31
3.21	Shield Can Lid RF Sub Assembly	32



3.22 Shield Can Lid BB	33
3.23 Gasket BB	34
3.24 Gasket RF.....	35
3.25 MComp Sheet Isolation.....	36
3.26 MComp Sheet (Lid BB)	37
3.27 MComp Sheet (Lid RF).....	38
3.28 MComp Sheet (GSM).....	39
3.29 MComp Sheet (UMTS).....	40
3.30 Spacer (LCD_conn).....	41
3.31 Cushion 0.0 mm (System conn).....	42
3.32 Liquid Indicator	43
3.33 Spacer Frame.....	44
3.34 MComp Sheet B to B.....	46
3.35 Cushion Microphone.....	47
3.36 Grill Speaker	48
3.37 Foil Adhesive Double Side 0.0 mmWindow Picture Light..	49
3.38 Window Other Picture Light	50
3.39 M2 Cover	51
4 Reassembly	52
4.1 Overview	52
4.1.1 Frame Sub Assembly PWB and Key Flex Module	53
4.1.2 Display 2,02 A-SI TFT	55
4.1.3 Camera Flex Module.....	56
4.1.4 Frame PWB Sub Assembly.....	57
4.1.5 Ant Main PIFA.....	58
4.1.6 Cover Rear Sub Assembly.....	59
4.1.7 Front Assembly	60
4.1.8 Battery & Cover Battery Sub Assembly.....	61
5 Revision history	62

1 Introduction



1.1 Equipment

SPECIAL TOOLS

Special tools text:

- NTZ 122 459 Torque Screwdriver (or equivalent)
- NTZ 122 288 Bits (T6)
- NTZ 112 1052 Bits (JCIS No 0)
- NTZ 112 302/2 Front Opening Tool
- 1207-0198 Camera Removal Tool 3MPixel
- NTZ 122 521 Flex Film Assembly Tool
- NTZ 112 590 Plectrum/SVC & Repair



STANDARD TOOLS

Standard tools text:

- Dentist Hook
- ESD Tweezers
- Nylon Pointer



ESD EQUIPMENT

Protect the phone from ESD damages whenever it has been opened by using:

- ESD-wristband
- ESD-gloves



LABEL EQUIPMENT

The following special equipment is required when replacing or installing a new label:

- Hot air flow solder station
- Zebra printer connected to computer





1.2 General cautions

The following cautions are considered to be generic for all phone models and will not be repeated in the Disassembly, Replacements and Reassembly sections:

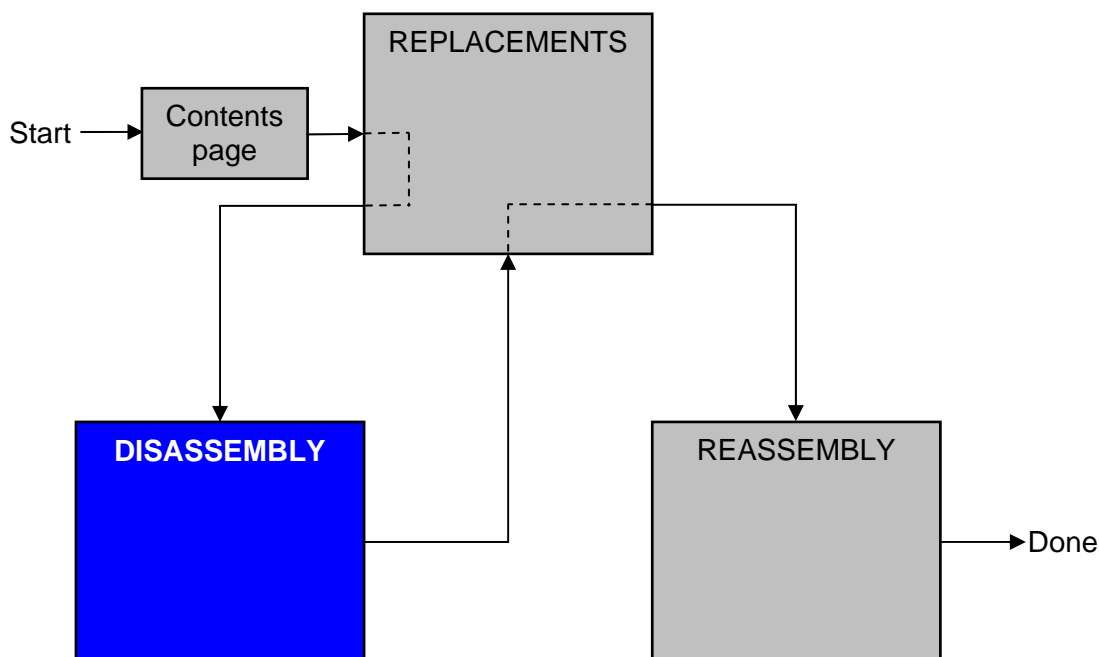
- ***SWITCH OFF THE PHONE AND REMOVE ANY MEMORY STICK BEFORE THE START OF THE DISASSEMBLY!***
- ***KEEP ALL CONTACT SURFACES CLEAN!***
- ***BE CAREFUL WHEN USING TOOLS LIKE THE DENTIST HOOK, TWEEZERS, OPENING TOOLS, GUITAR PICK ETC. TO AVOID SCRATCHES OR DAMAGES TO THE EXTERIOR AND INTERIOR PARTS OF THE PHONE!***
- ***BE CAREFUL NOT TO DAMAGE ANY CONTACT SPRINGS!***
- ***REMEMBER TO REMOVE THE PROTECTION FOILS ON NEW PARTS SUCH AS THE FRONT COVER AND LCD!***
- ***NEVER TOUCH THE DISPLAY GLASS!***
- ***USE AIR BLOW EQUIPMENT TO KEEP THE FRONT WINDOW AND DISPLAY MODULE DUST FREE!***

1.3 Adhesives

Use a dentist hook and/or the tweezers to remove old adhesives.
Clean the surface with isopropyl alcohol before attaching new adhesives.

2 Disassembly

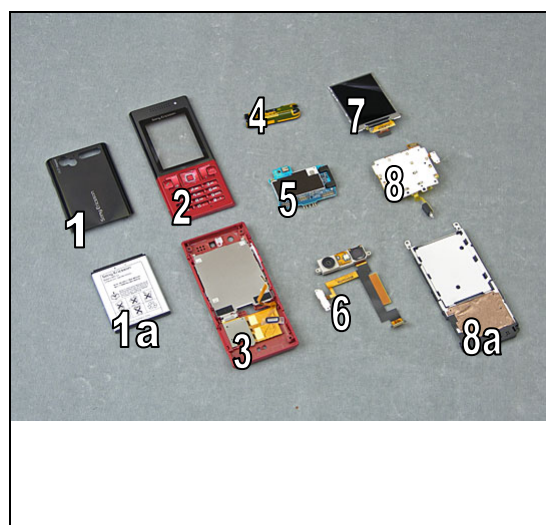
When you are going to replace a part being listed in *Replacements*, the instruction of that section usually begins by directing you to this *Disassembly* section with a specification of the instructions you have to carry out in order to disassemble the phone as far as needed before returning to *Replacements* for the actual replacement.



2.1 Overview

The disassembly is done in the following sequence:

1. Battery Cover
- 1a. Cover Battery Sub Assembly
2. Front Assembly
3. Cover Rear Sub Assembly
4. Ant Main PIFA
5. Main PWB
6. Camera Flex Module
7. Display 2,02 A-SI TFT
8. Key Flex Module
- 8a. Frame Sub Assembly PWB



2.1.1 Cover Battery Sub Assembly & Battery

Use your fingers to unsnap the two locks on the side of the phone.



Use your fingers to lift up the battery cover.

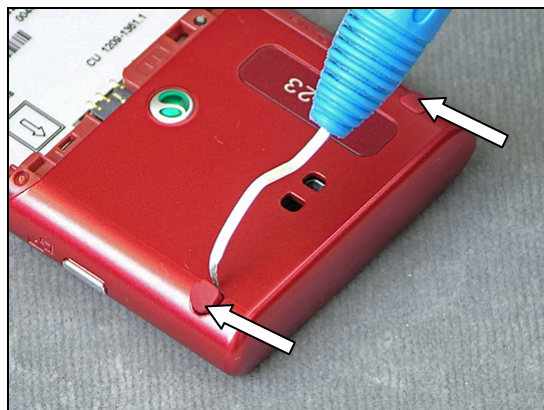


Use your fingers to remove the Battery.



2.1.2 Front Assembly

Use a Dentist Hook to remove the two Screw Caps.



Use a Torx bit no 6 to remove the four Screw Other Len: 5.0
Diam: 1.7.



Use a Guitar Pick to unsnap the Front Cover.



Continue on the other side to unsnap the Front Cover.



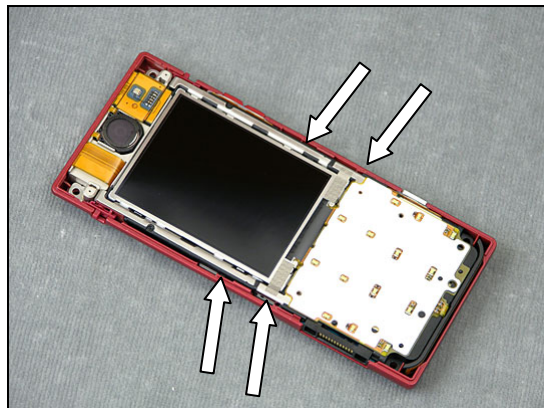
Disassembly Instruction *continued*

Use your fingers to remove the Front Assembly.



2.1.3 Cover Rear Sub Assembly

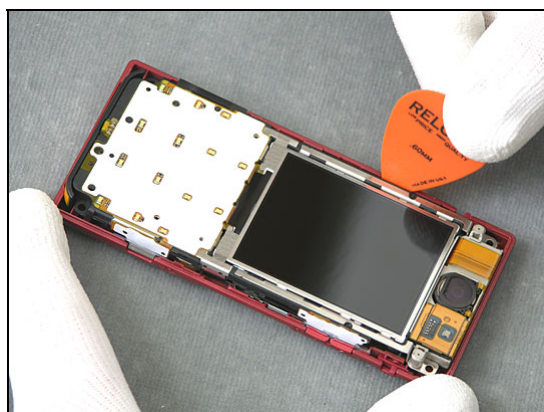
Locate the four snap hooks.



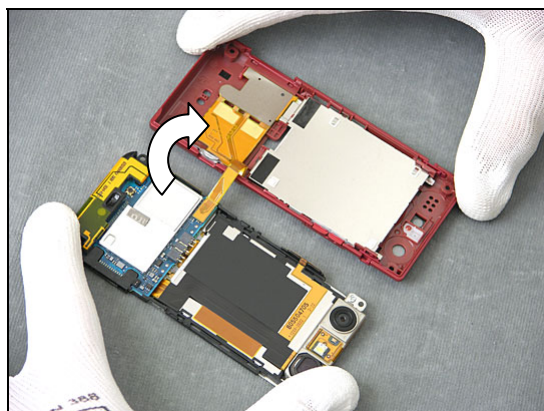
Use a Guitar Pick to unhook the Cover Rear Sub Assembly.



Use a Guitar Pick to unhook the Cover Rear Sub Assembly.

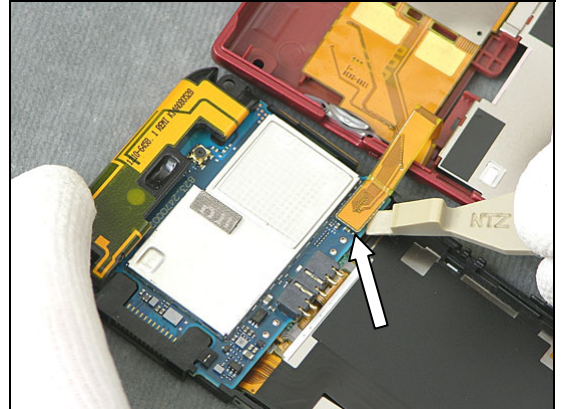


Use your fingers to flip over and open up the Cover Rear Sub Assembly.



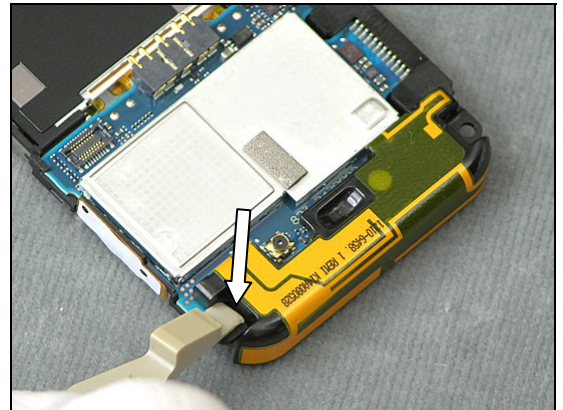
Disassembly Instruction *continued*

Use a Front Opening Tool to detach the Cover Rear Sub Assembly BtB connection from the Frame PWB Sub Assembly.

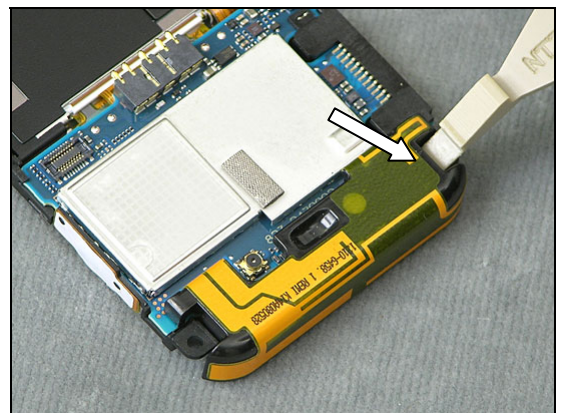


2.1.4 Ant Main PIFA

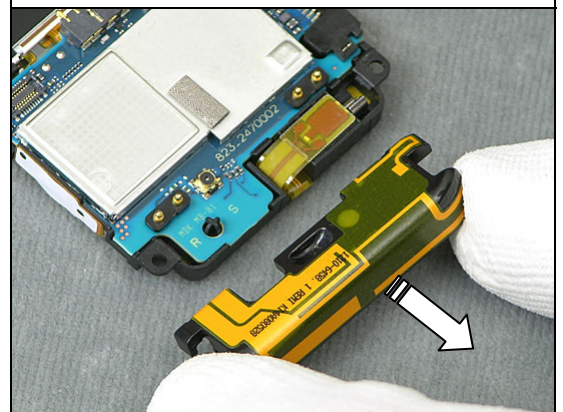
Use a Front Opening Tool to unsnap the Ant Main PIFA.



Use a Front Opening Tool to remove the Ant Main PIFA.

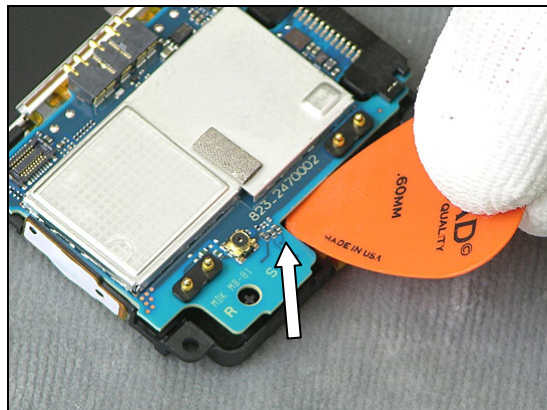


Use your fingers to remove the Ant Main PIFA.

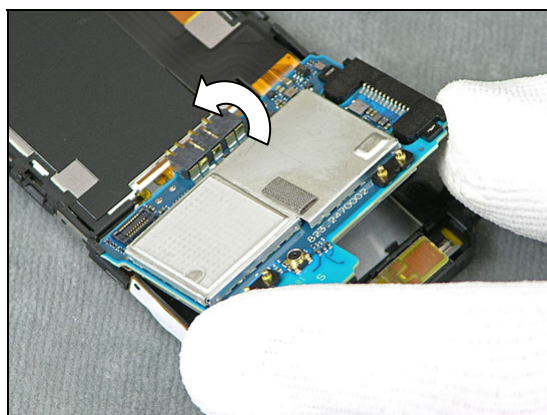


2.1.5 Frame PWB Sub Assembly

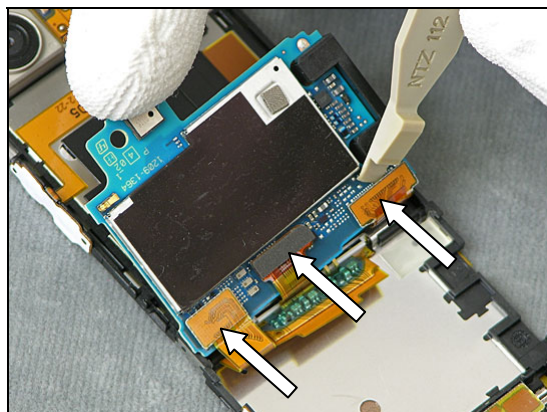
Use a Guitar Pick to unsnap the Frame PWB Sub Assembly.



Use your fingers to flip over the Frame PWB Sub Assembly.

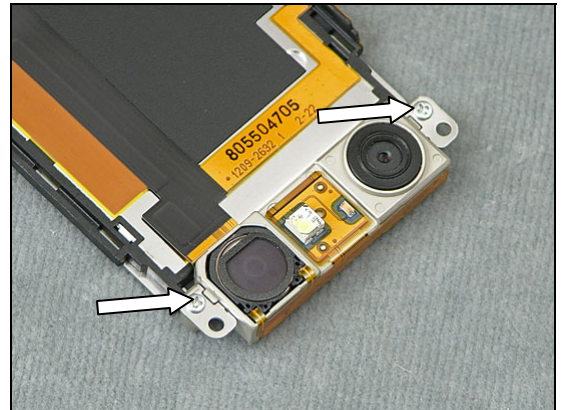


Use a Front Opening Tool to detach the three BtB connectors.

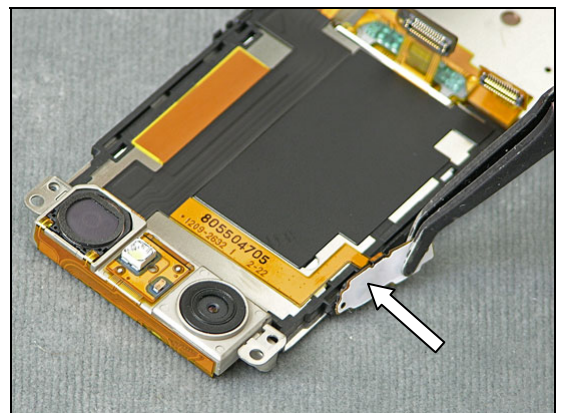


2.1.6 Camera Flex Module

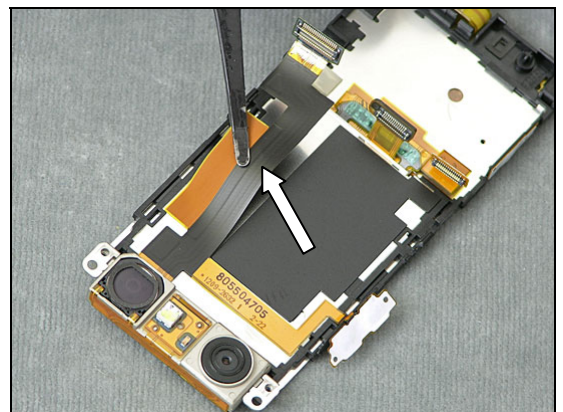
Use a Screwdriver with the JCIS bit to remove the two
Screw Other Len:3.5 Diam:1.4 M.



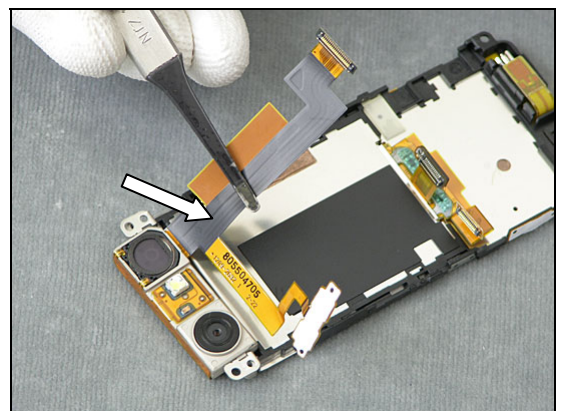
Use a Flex Film Assembly Tool to detach the Key Volume Pad.



Use a Flex Film Assembly Tool to detach the Camera Flex Module.

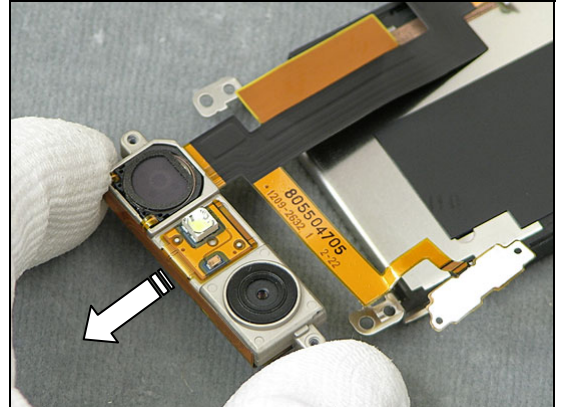


Use a Flex Film Assembly Tool to detach the Camera Flex Module.



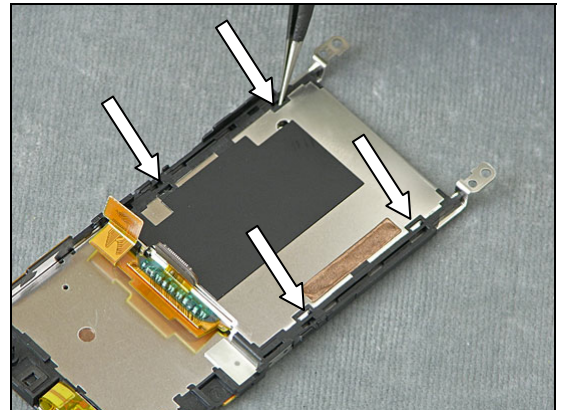
Disassembly Instruction *continued*

Remove the Camera Flex Module.

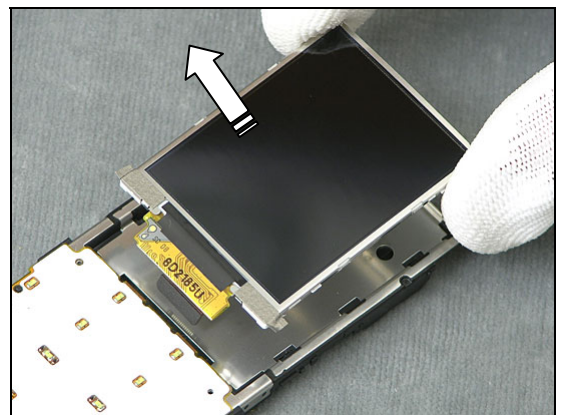


2.1.7 Display 2,02A-SI TFT

Use a pair of ESD Tweezers to unsnap the Display 2,02 A-SI TFT.

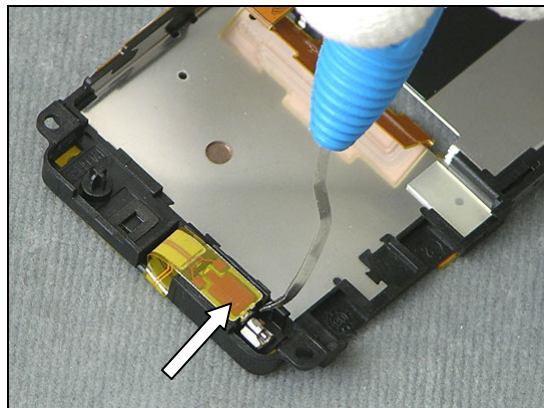


Use your fingers to remove the Display 2,02 A-SI TFT.

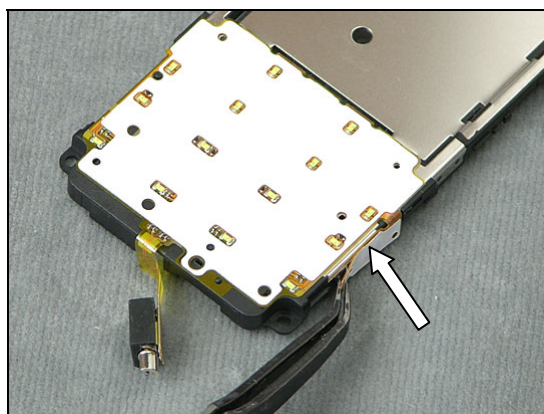


2.1.8 Key Flex Module & Frame Sub Assembly PWB

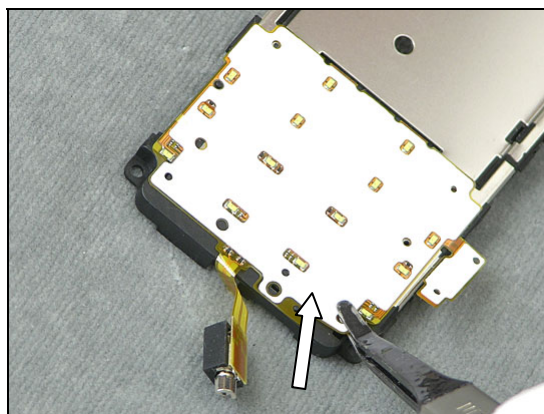
Use a Dentist Hook to unsnap the Vibrator.



Use a Flex Film Assembly Tool to detach the Camera Pad.

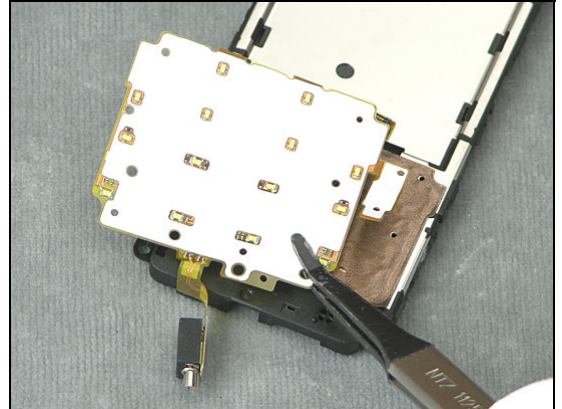


Use a Flex Film Assembly Tool to detach the Key Flex Module.

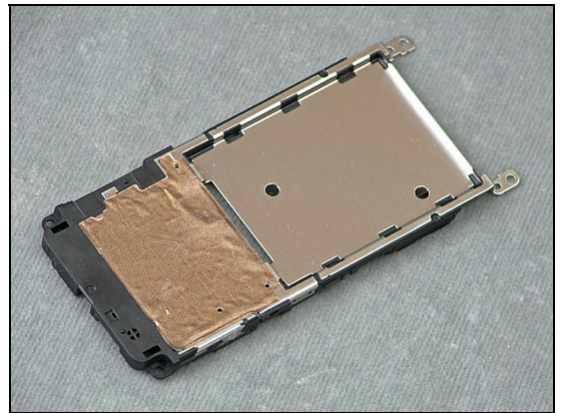


Disassembly Instruction *continued*

Use a Flex Film Assembly Tool to remove the Key Flex Module.



Frame Sub Assembly PWB.



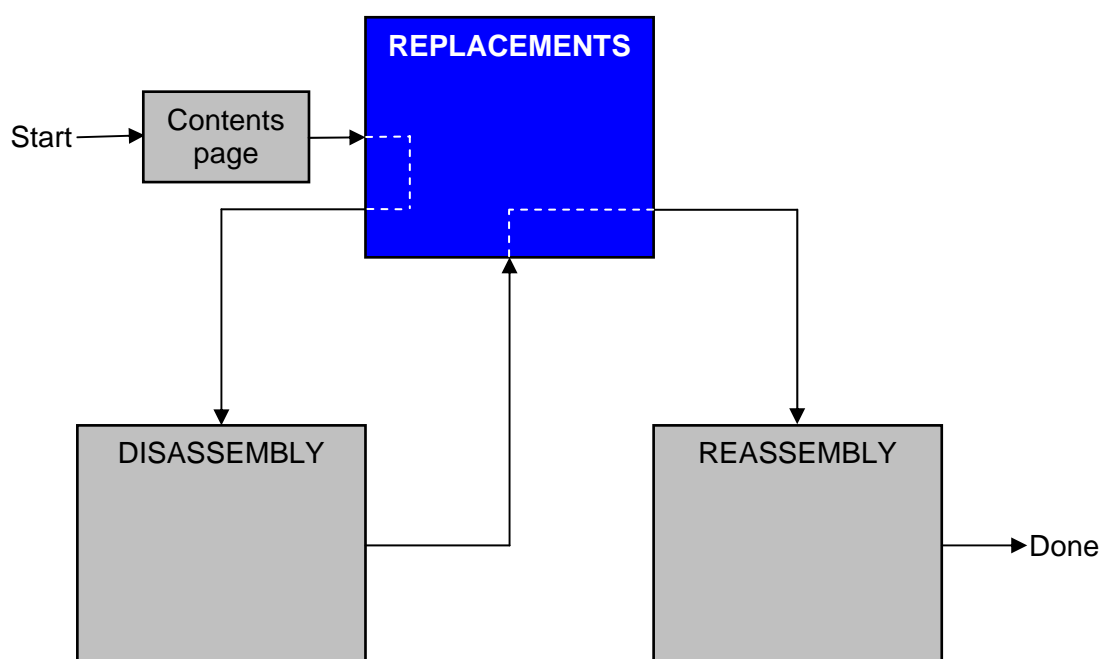
3 Replacements

Search for the part to be replaced on the Contents page and go to that instruction to be found in this *Replacements* section.

The instruction usually begins by directing you to the *Disassembly* section with a specification of the instructions you have to carry out in order to disassemble the phone as far as needed before the actual replacement.

Go back to this *Replacements* section and carry out the instruction.

The instruction usually ends by directing you to the *Reassembly* section with a specification of the instructions you have to carry out in order to reassemble the phone.





3.1 Cover Battery Sub Assembly & Battery

Follow the 2.1.1 Disassembly instructions!

Replace Battery Cover and/or Battery

Follow the 4.1.8 Reassembly instructions!

3.2 Front Assembly

Follow the 2.1.1 – 2.1.2 Disassembly instructions!

Replace Front Cover Assembly Complete

Follow the 4.1.7 – 4.1.8 Reassembly instructions!

3.3 Cover Rear Sub Assembly

Follow the 2.1.1 – 2.1.3 Disassembly instructions!

Replace Cover Rear Sub Assembly

Follow the 4.1.6 – 4.1.8 Reassembly instructions!

3.4 Ant Main PIFA

Follow the 2.1.1 – 2.1.4 Disassembly instructions!

Replace Ant Main PIFA

Follow the 4.1.5 – 4.1.8 Reassembly instructions!

3.5 Camera Flex Module

Follow the 2.1.1 – 2.1.6 Disassembly instructions!

Replace Camera Flex Module

Follow the 4.1.3 – 4.1.8 Reassembly instructions!

3.6 Display 2,02 A-SI TFT

Follow the 2.1.1 – 2.1.7 Disassembly instructions!

Replace Display 2,02 A-SI TFT

Follow the 4.1.2 – 4.1.8 Reassembly instructions!!

3.7 Key Flex Module

Follow the 2.1.1 – 2.1.8 Disassembly instructions!

Replace Key Flex Module

Follow the 4.1.1 – 4.1.8 Reassembly instructions!

3.8 Frame PWB Sub Assembly

Follow the 2.1.1 – 2.1.8 Disassembly instructions!

Replace Frame PWB Sub Assembly

Follow the 4.1.1 – 4.1.8 Reassembly instructions!

3.9 Cap Screw

No disassembly needed, see the Disassembly instruction 2.1.2!

Replace Screw Cap

No reassembly needed, see the Reassembly instruction 4.1.7!

3.10 Screw Other Len:5.0 Diam:1.7

Follow the 2.1.1 – 2.1.2 Disassembly instructions!

Replace Screw Other Len:5.0 Diam:1.7

Follow the 4.1.7 – 4.1.8 Reassembly instructions!

3.11 Screw Other Len:3.5 Diam:1.4 M

Follow the 2.1.1 – 2.1.6 Disassembly instructions!

Replace Screw Other Len:3.5 Diam:1.4 M

Follow the 4.1.3 – 4.1.8 Reassembly instructions!

3.12 Cap Grommet CamR

Follow the 3.12 Replacements instructions, Removal!

Replace Cap Grommet CamR

Follow the 3.12 Replacements instructions, Installation!

3.13 Frame Camera Sub Assembly

Follow the 3.13 Replacements instructions, Removal!

Replace Frame Camera Sub Assembly

Follow the 3.13 Replacements instructions, Installation!

3.14 SIM/M2 Flex Module

Follow the 3.14 Replacements instructions, Removal!

Replace SIM/M2 Flex Module

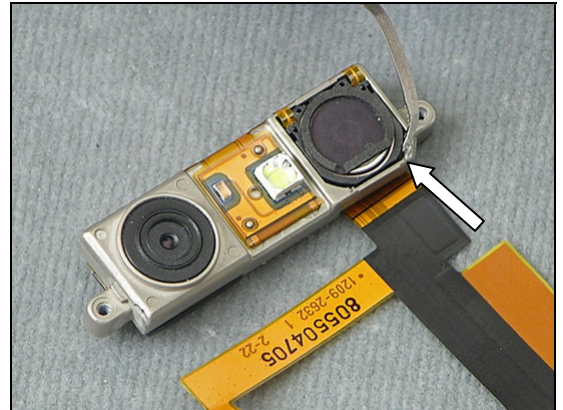
Follow the 3.14 Replacements instructions, Installation!

3.15 Camera 3 MPixel CMOS

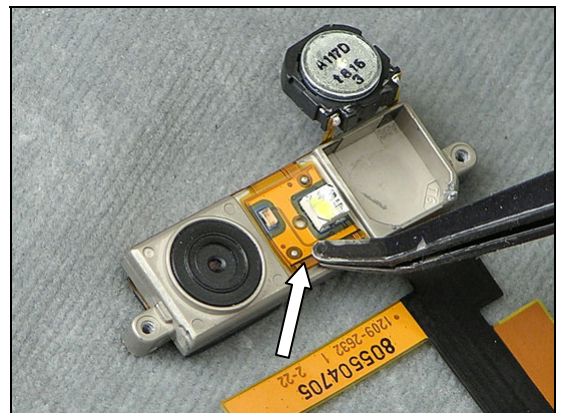
Removal

Follow the 2.1.1 – 2.1.6 Disassembly instructions!

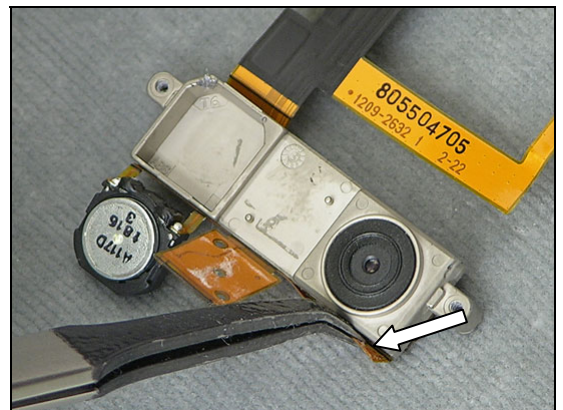
Use a Dentist Hook to remove the Speaker from the Frame Camera Sub Assembly.



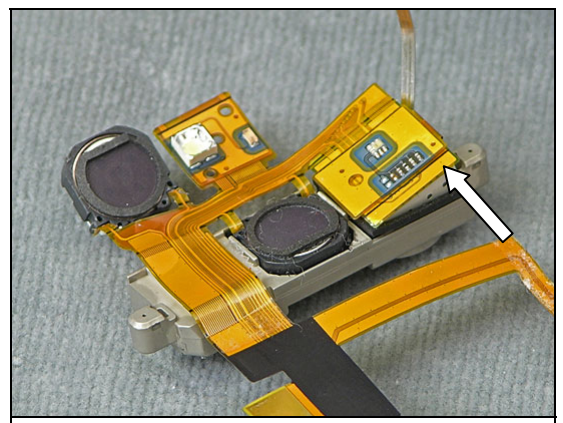
Use a Flex Film Removal Tool to remove the Flex from the Frame Camera Sub Assembly.



Use a Flex Film Removal Tool to remove the Flex from the Frame Camera Sub Assembly.

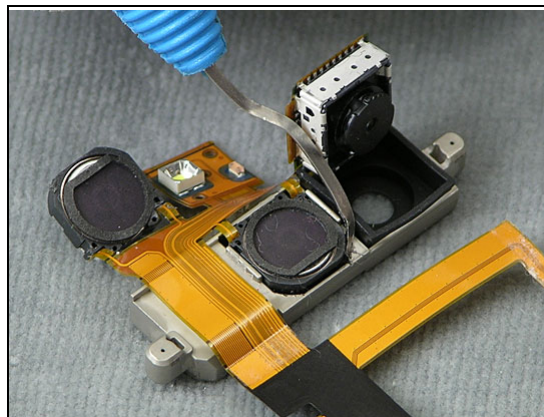


Use a Dentist Hook to remove the Camera 3 MPixel CMOS from the Frame Camera Sub Assembly.

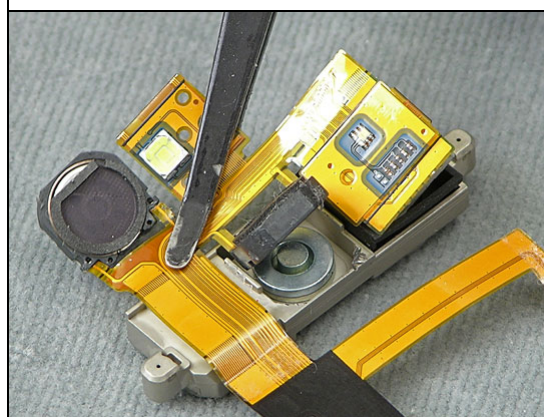


Replacements Instruction *continued*

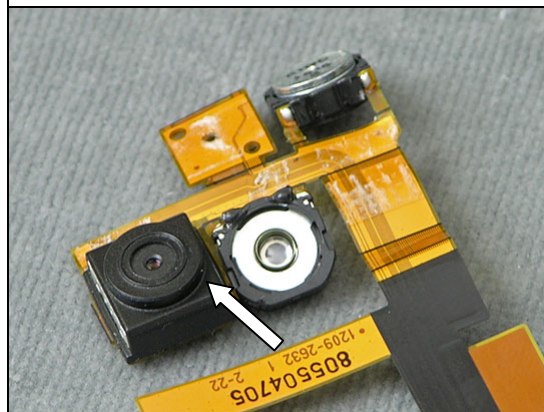
Use a Dentist Hook to remove the Speaker from the Frame Camera Sub Assembly.



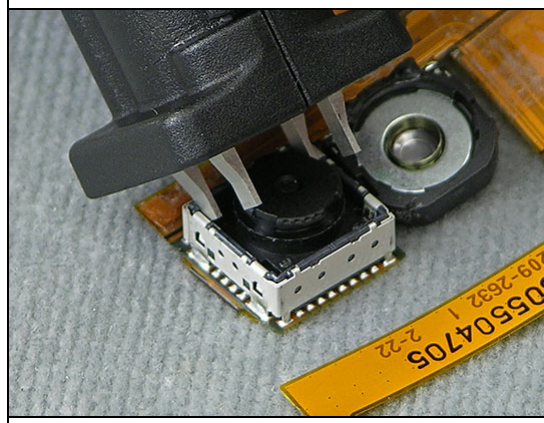
Use a Flex Film Removal Tool to remove the Speakers and the Camera 3 Mpixel CMOS from the Frame Camera Sub Assembly.



Use your fingers to remove the Cap Grommet CamR from the Camera 3 Mpixel CMOS.

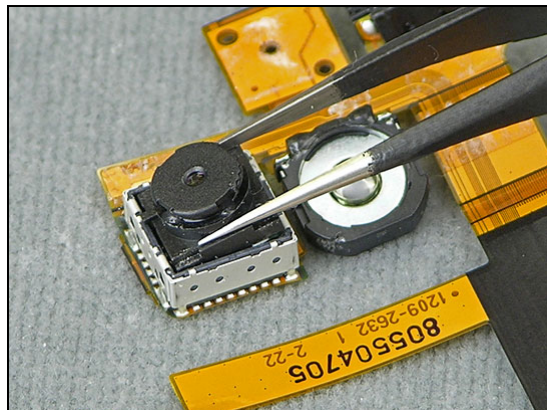


Use a Camera Removal Tool to loosen Camera 3 MPixel CMOS.



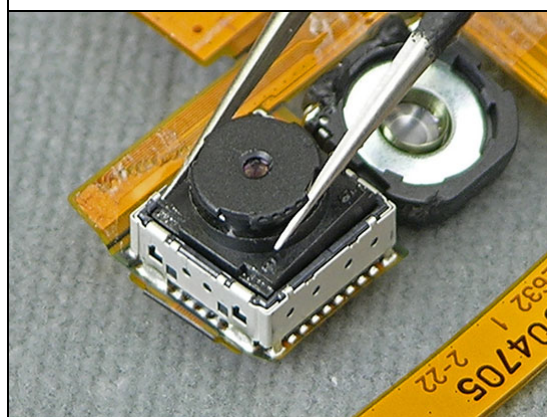
Replacements Instruction *continued*

Use a pair of ESD Tweezers to remove and replace the Camera 3 MPixel CMOS.

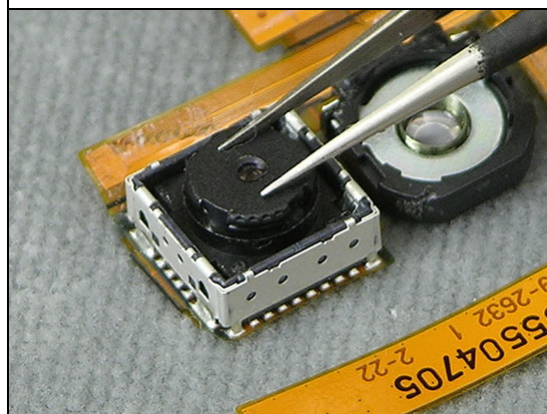


Installation

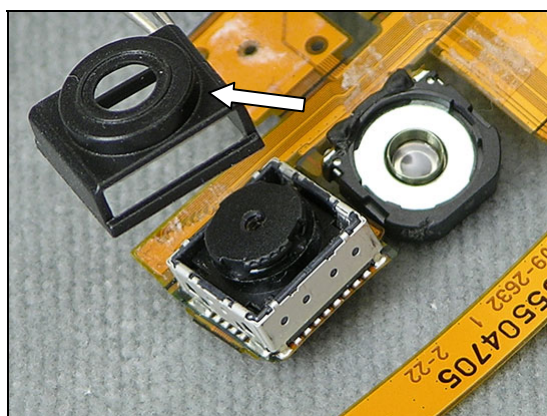
Use a pair of ESD Tweezers to place the Camera 3 MPixel CMOS.



Use a pair of ESD Tweezers to attach the Camera 3 MPixel CMOS.

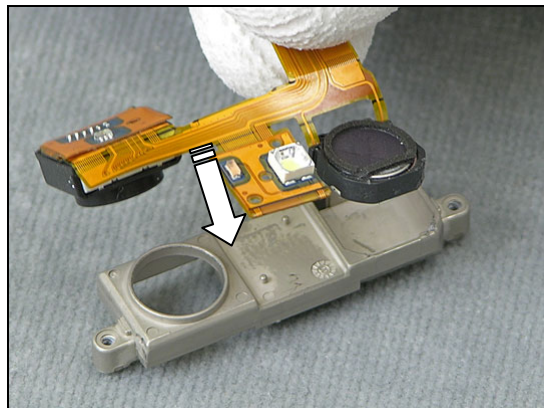


Use a pair of ESD Tweezers to place the Cap Grommet CamR to the Camera 3 MPixel CMOS.

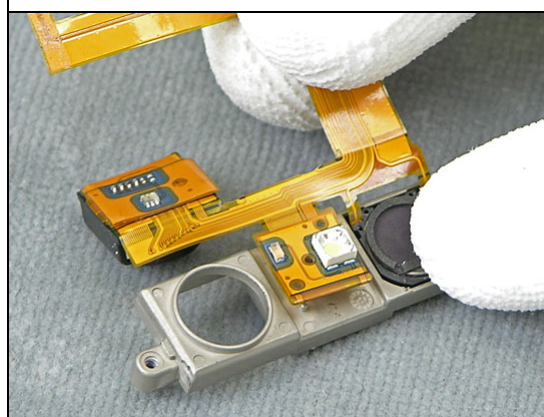


Replacements Instruction *continued*

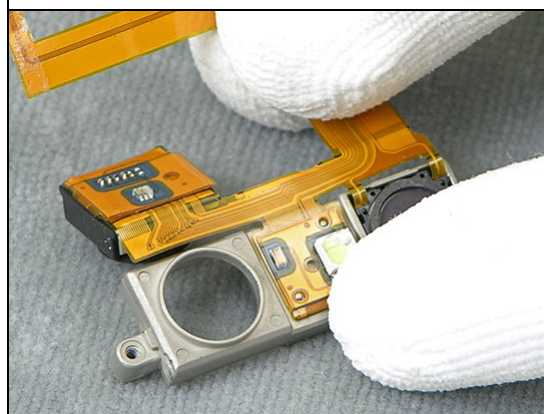
Use your fingers to place the Speaker, the Cap Grommet CamR and the Camera 3 Mpixel CMOS to the Frame Camera Sub Assembly.



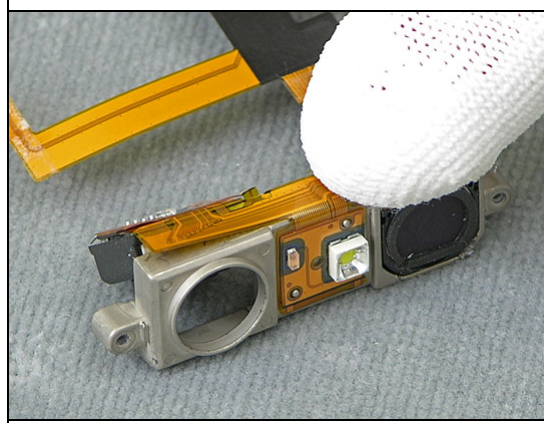
Use your fingers to attach the Speaker, the Cap Grommet CamR and the Camera 3 Mpixel CMOS to the Frame Camera Sub Assembly.



Use your fingers to attach the Speakers, the Cap Grommet CamR and the Camera 3 Mpixel CMOS to the Frame Camera Sub Assembly.

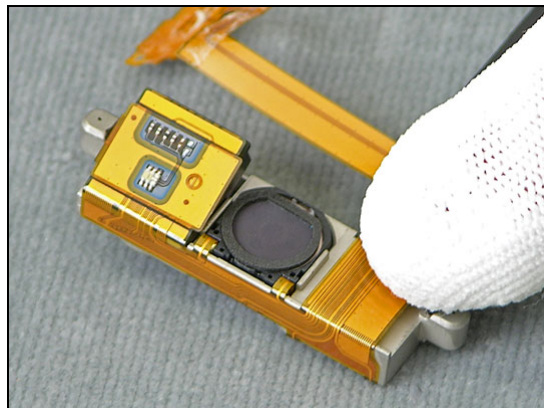


Use your fingers to attach the Speakers, the Cap Grommet CamR and the Camera 3 Mpixel CMOS to the Frame Camera Sub Assembly.

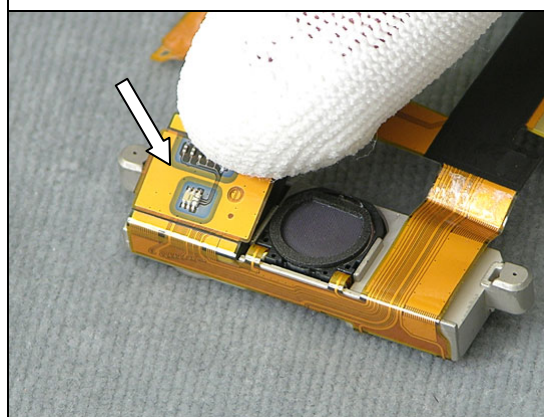


Replacements Instruction *continued*

Use your fingers to attach the Speakers, the Cap Grommet CamR and the Camera 3 Mpixel CMOS to the Frame Camera Sub Assembly.



Use your fingers to attach the Speakers, the Cap Grommet CamR and the Camera 3 Mpixel CMOS to the Frame Camera Sub Assembly.



Follow the 4.1.3 – 4.1.8 Reassembly instructions!



3.16 Keyboard

Removal

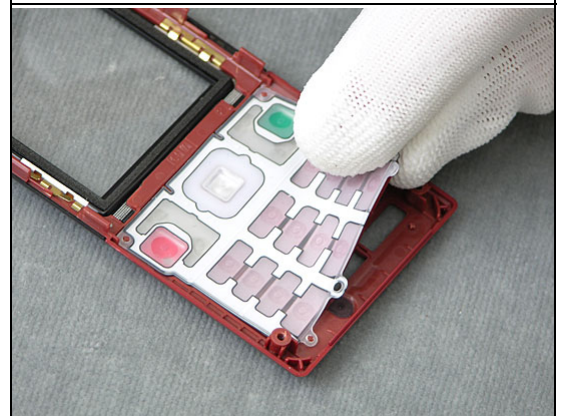
Follow the 2.1.1 – 2.1.2 Disassembly instructions!

Use a pair of ESD Tweezers to remove the Keyboard.

Installation

Use your fingers to position the Keyboard.

Follow the 4.1.7 – 4.1.8 Reassembly instructions!



3.17 Key Volume

Removal

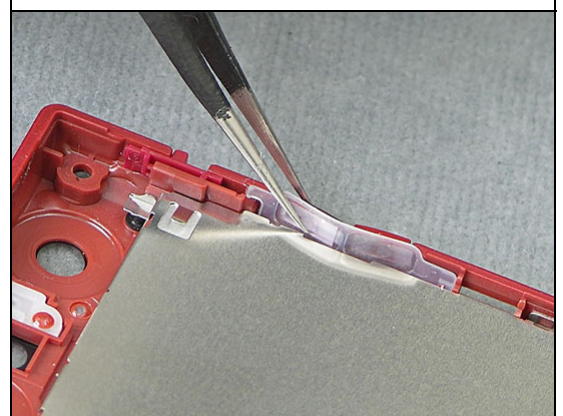
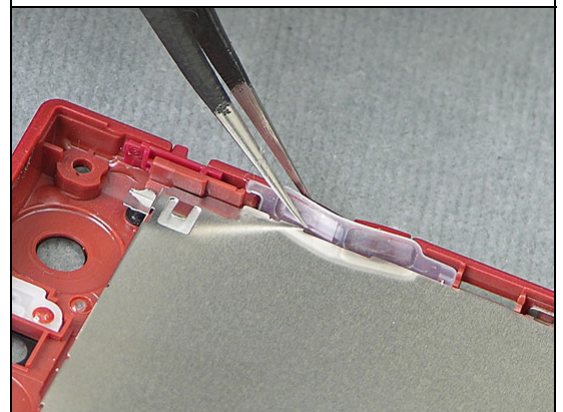
Follow the 2.1.1 – 2.1.3 Disassembly instructions!

Use a pair of ESD Tweezers to remove the Key Volume.

Installation

Use a pair of ESD Tweezers to position the Key Volume.

Follow the 4.1.6 – 4.1.8 Reassembly instructions!



3.18 Key Camera

Removal

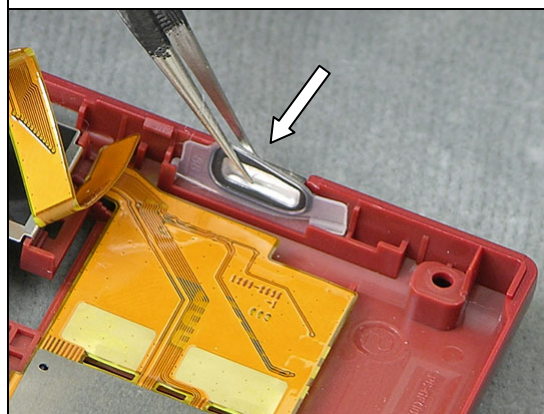
Follow the 2.1.1 – 2.1.3 Disassembly instructions!

Use a pair of ESD Tweezers to remove the Key Camera.

Installation

Use a pair of ESD Tweezers to position the Key Camera.

Follow the 4.1.6 – 4.1.8 Reassembly instructions!



3.19 KRH-Label

Follow the 2.1.1 Disassembly instructions!

- Read the old label and/or write the information into the “Label make” program before removal
- Note the position of the label before removal
- Heat up the label by using hot air, if needed
- Carefully remove the label without causing scratches
- If there still are residues, clean the surface with isopropyl alcohol



- Check that the proper label format is loaded in the Zebra printer
- Write a new label by using the program “Label make” and check that the printing is OK
- Take the new label and place it onto the frame as in the adjacent picture

One label only is allowed!

Follow the 4.1.8 Reassembly instructions

3.20 Co-branding Generic

Removal

No Disassembly needed!

Use a pair of ESD Tweezers to remove the Co-branding Generic.

Installation

Use a pair of ESD Tweezers to place the Co-branding Generic.

Use your fingers to attach the Co-branding Generic.

No Reassembly needed!

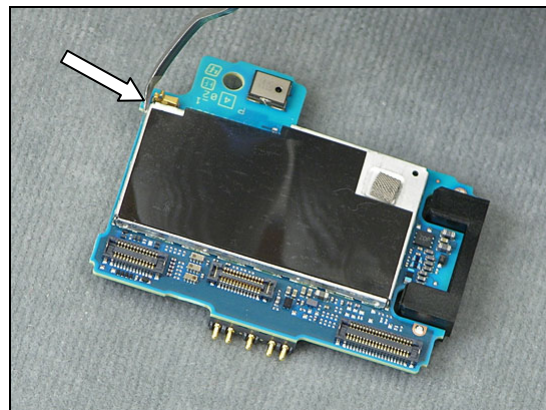


3.21 Shield Can Lid RF Sub Assembly

Removal

Follow the 2.1.1 – 2.1.5 Disassembly instructions!

Use a Dentist Hook to remove the Shield Can Lid RF Sub Assembly.



Installation

Use your fingers to position a new Shield Can Lid RF Sub Assembly.

Follow the 4.1.4 – 4.1.8 Reassembly instructions!

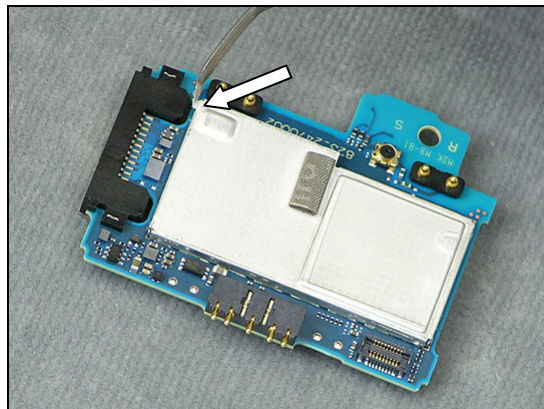


3.22 Shield Can Lid BB

Removal

Follow the 2.1.1 – 2.1.5 Disassembly instructions!

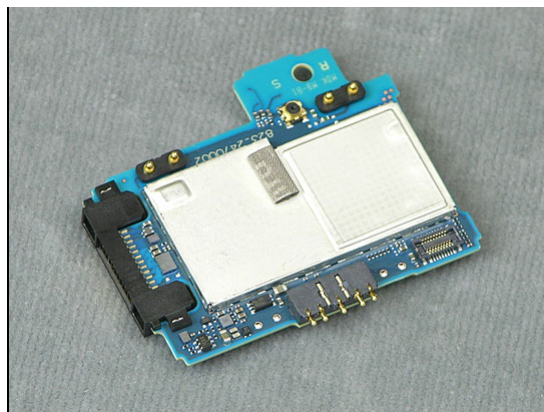
Use a Dentist Hook to remove the Shield Can Lid BB.



Installation

Use your fingers to position a new Shield Can Lid BB.

Follow the 4.1.4 – 4.1.8 Reassembly instructions!

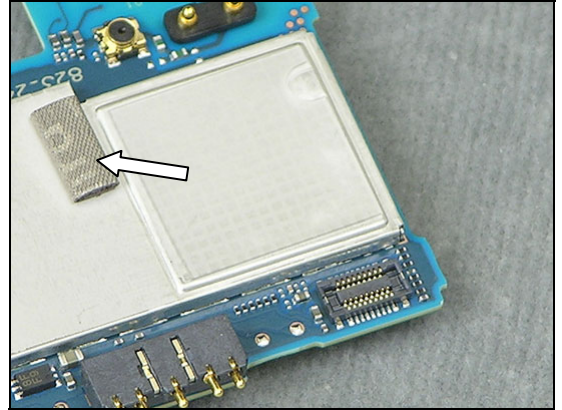


3.23 Gasket BB

Removal

Follow the 2.1.1 – 2.1.5 Disassembly instructions!

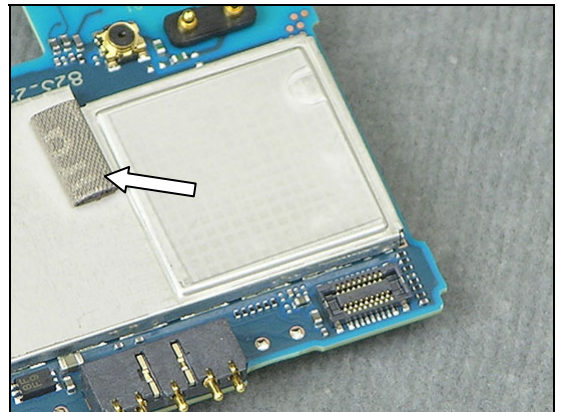
Use a Dentist Hook to remove the Gasket BB.



Installation

Use a pair of ESD Tweezers to position a new Gasket BB.

Follow the 4.1.4 – 4.1.8 Reassembly instructions!

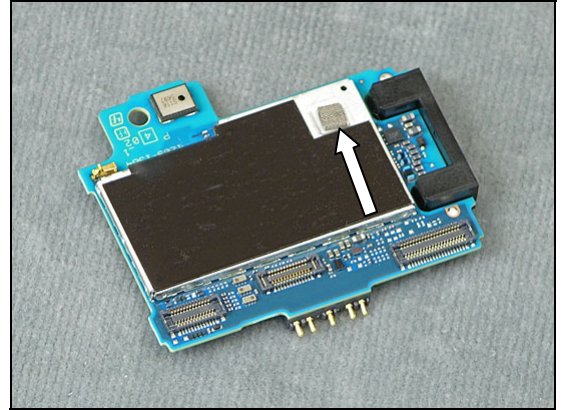


3.24 Gasket RF

Removal

Follow the 2.1.1 – 2.1.5 Disassembly instructions!

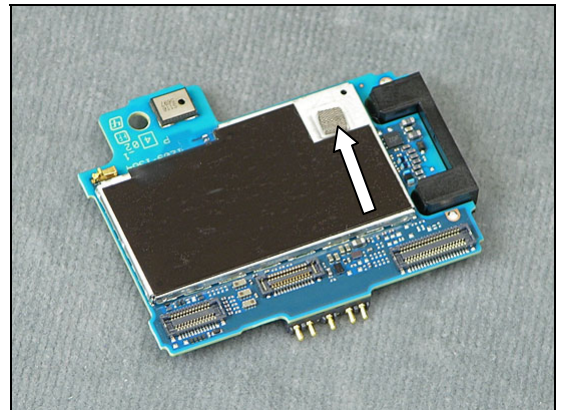
Use a Dentist Hook to remove the Gasket RF.



Installation

Use a pair of ESD Tweezers to position a new Gasket RF.

Follow the 4.1.4 – 4.1.8 Reassembly instructions!

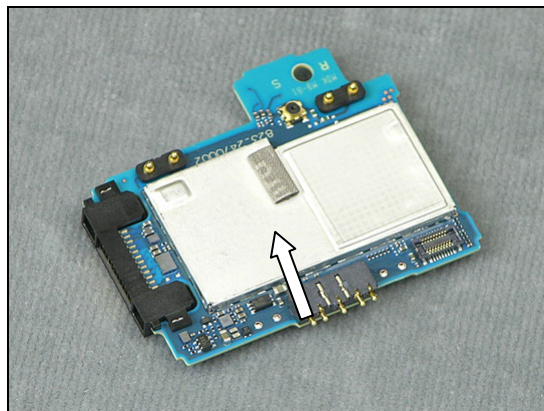


3.25 MComp Sheet Isolation

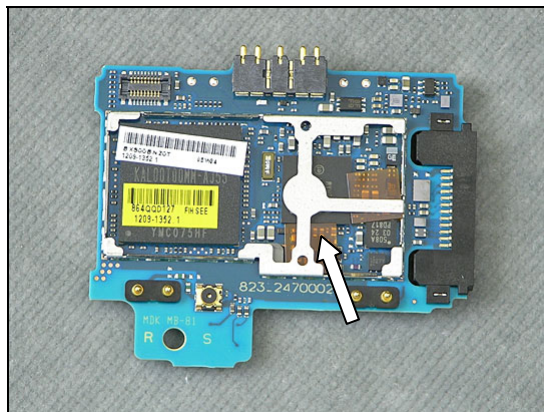
Removal

Follow the 2.1.1 – 2.1.5 Disassembly instructions!

Use a Dentist Hook to remove the Shield Can Lid BB.



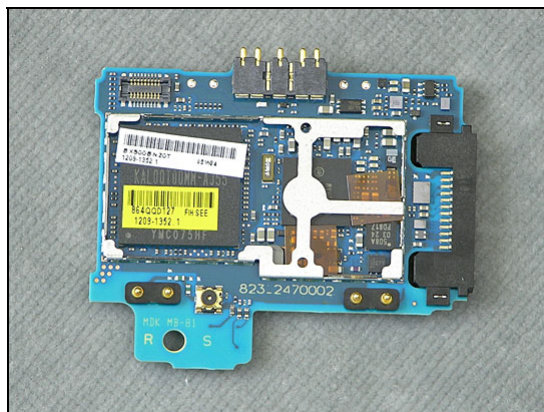
Use a pair of ESD Tweezers to remove the Sheet Isolation.



Installation

Use a pair of ESD Tweezers to position a new Sheet Isolation and a use your fingers to position a new Shield Can Lid BB.

Follow the 4.1.4 – 4.1.8 Reassembly instructions!

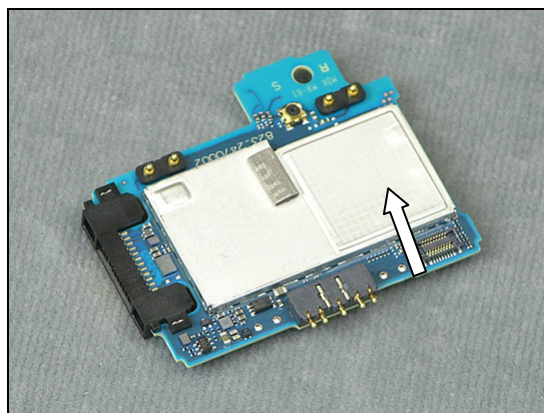


3.26 MComp Sheet (Lid BB)

Removal

Follow the 2.1.1 – 2.1.3 Disassembly instructions!

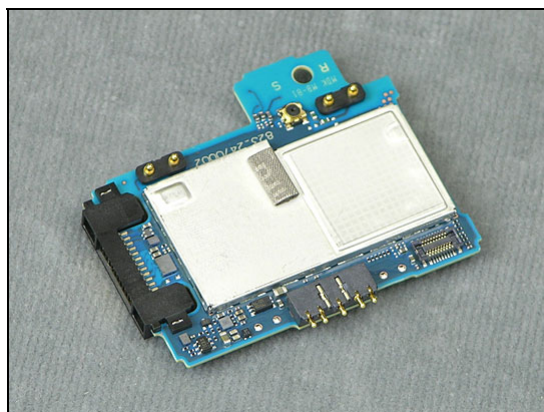
Use a Dentist Hook to remove the MComp Sheet (Lid BB).



Installation

Use a pair of ESD Tweezers to position a new MComp Sheet (Lid BB).

Follow the 4.1.4 – 4.1.8 Reassembly instructions!

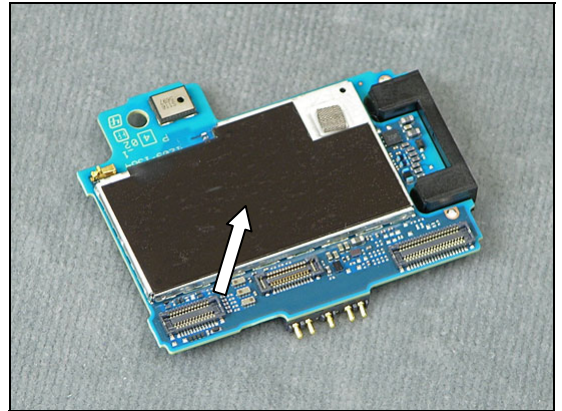


3.27 MComp Sheet (Lid RF)

Removal

Follow the 2.1.1 – 2.1.5 Disassembly instructions!

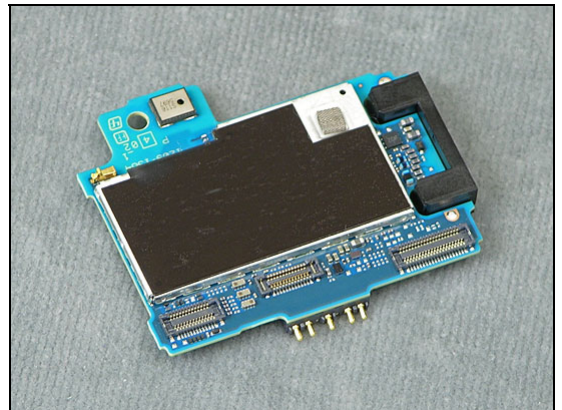
Use a Dentist Hook to remove the MComp Sheet (Lid RF).



Installation

Use a pair of ESD Tweezers to position a new MComp Sheet (Lid RF).

Follow the 4.1.4 – 4.1.8 Reassembly instructions!

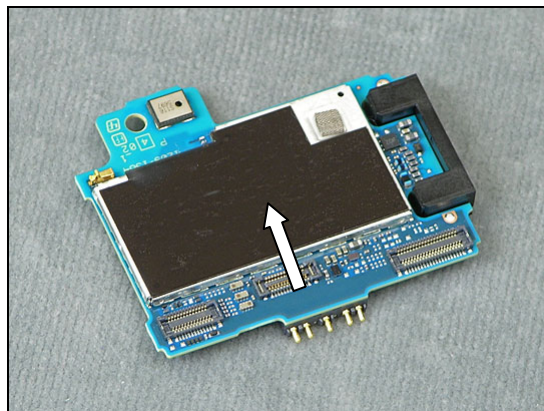


3.28 MComp Sheet (GSM)

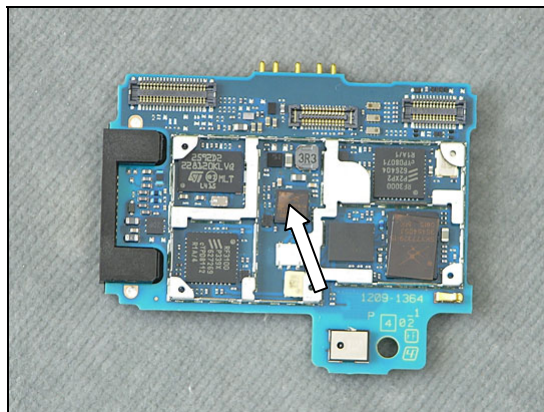
Removal

Follow the 2.1.1 – 2.1.5 Disassembly instructions!

Use a Dentist Hook to remove the Shield Can Lid RF.



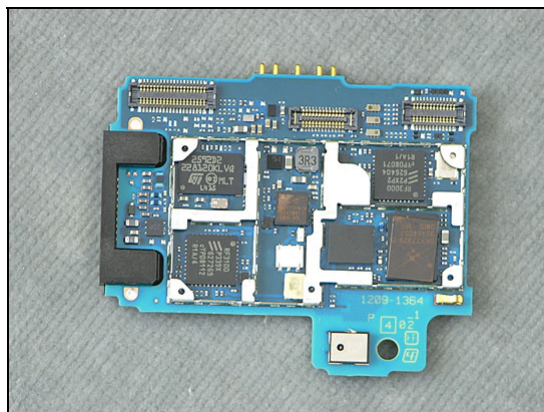
Use a pair of ESD Tweezers to remove the MComp Sheet (GSM).



Installation

Use a pair of ESD Tweezers to position a new MComp Sheet (GSM) and a use your fingers to position a new Shield Can Lid RF.

Follow the 4.1.4 – 4.1.8 Reassembly instructions!

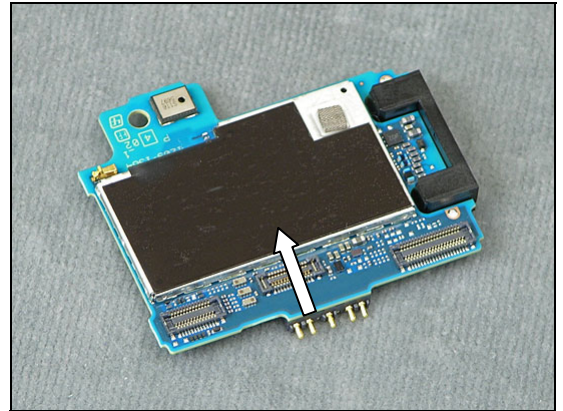


3.29 MComp Sheet (UMTS)

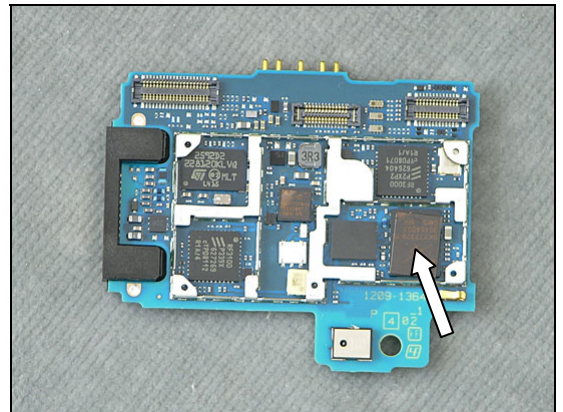
Removal

Follow the 2.1.1 – 2.1.5 Disassembly instructions!

Use a Dentist hook to remove the Shield Can Lid RF.



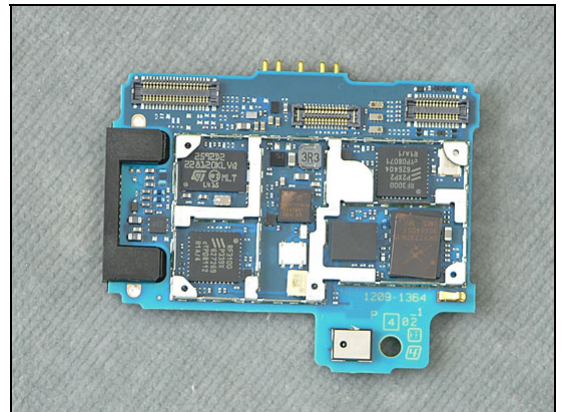
Use a pair of ESD Tweezers to remove the MComp Sheet (UMTS).



Installation

Use a pair of ESD Tweezers to position a new MComp Sheet (UMTS) and a use your fingers to position a new Shield Can Lid RF.

Follow the 4.1.4 – 4.1.8 Reassembly instructions!

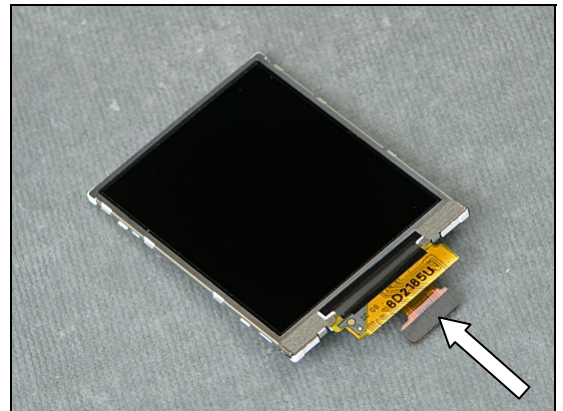


3.30 Spacer (LCD_conn)

Removal

Follow the 2.1.1 – 2.1.7 Disassembly instructions!

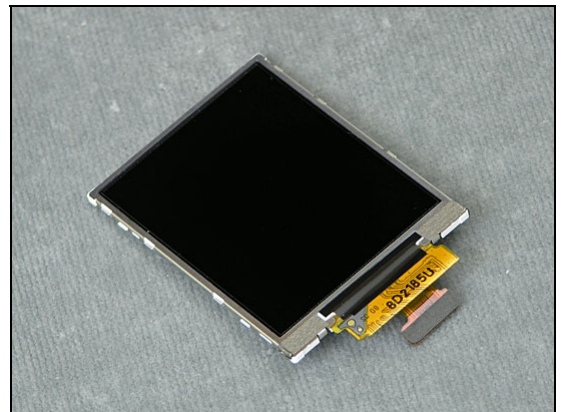
Use a Dentist Hook to remove the Spacer (LCD_conn).



Installation

Use a pair of ESD Tweezers to position a new Spacer (LCD_conn).

Follow the 4.1.2 – 4.1.8 Reassembly instructions!

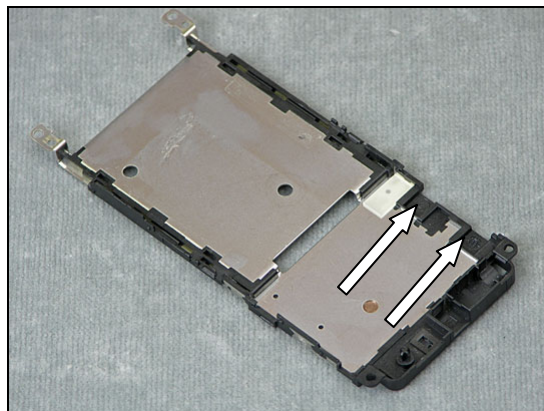


3.31 Cushion 0.0 mm (System conn)

Removal

Follow the 2.1.1 – 2.1.5 Disassembly instructions!

Use a Dentist Hook to remove the Cushion 0.0 mm (System conn).



Installation

Use a pair of ESD Tweezers to position the Cushion 0.0 mm (System conn).

Follow the 4.1.4 – 4.1.8 Reassembly instructions!

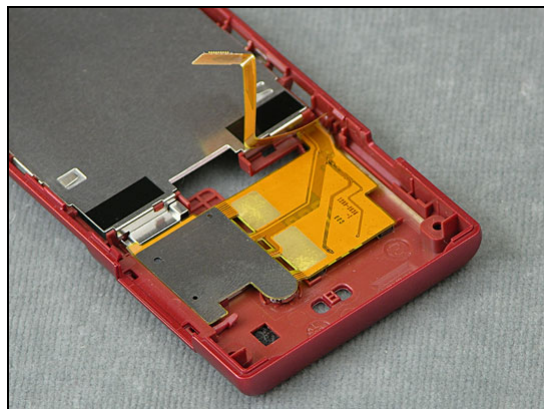


3.32 Liquid Indicator

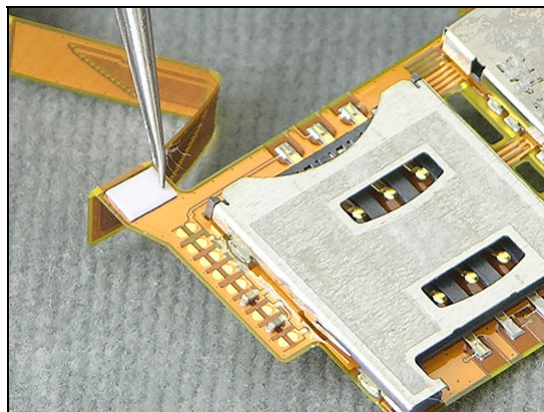
Removal

Follow the 2.1.1 – 2.1.3 Disassembly instructions!

Use a Front Opening Tool to remove the SIM/M2 Flex Module.

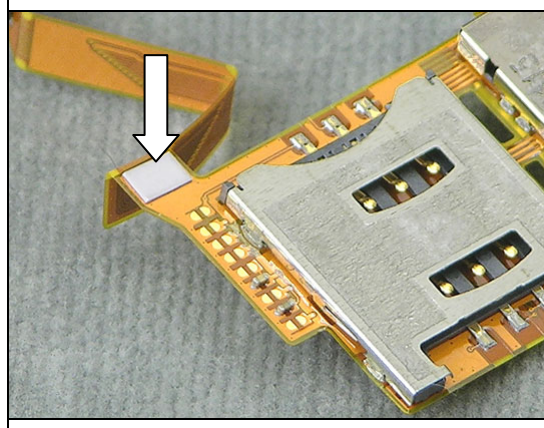


Use a pair of ESD Tweezers to replace the Liquid Indicator.



Installation

Use your fingers to position the Liquid Indicator.



Replacements Instruction *continued*

Use your fingers to attach the SIM/M2 Flex Module.

Follow the 4.1.6 – 4.1.8 Reassembly instructions!



3.33 Spacer Frame

Removal

Follow the 2.1.1 – 2.1.6 Disassembly instructions

Use a pair Of Tweezers to remove the Spacer Frame



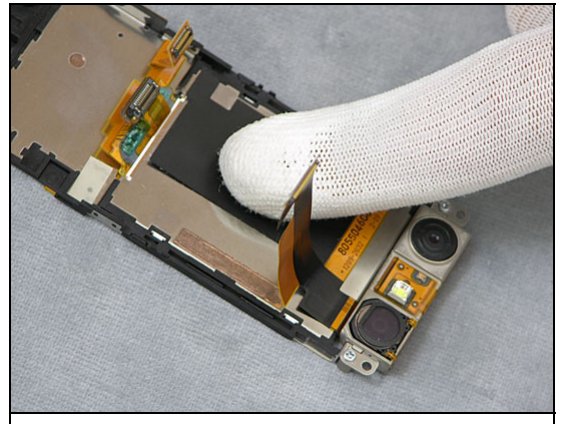
Installation

Use a pair Of Tweezers to position the Spacer Frame



Use your fingers to attach the Spacer Frame

Follow the 4.1.3 – 4.1.8 Reassembly instructions!

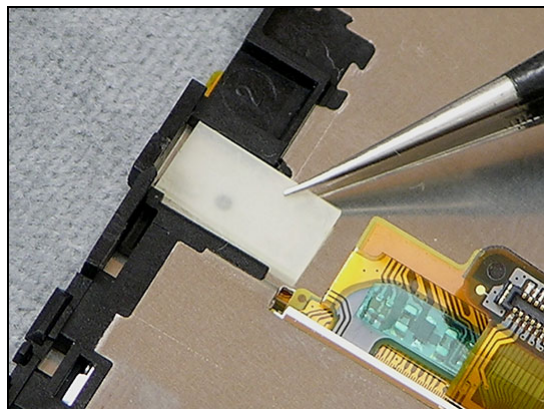


3.34 MComp Sheet B to B

Removal

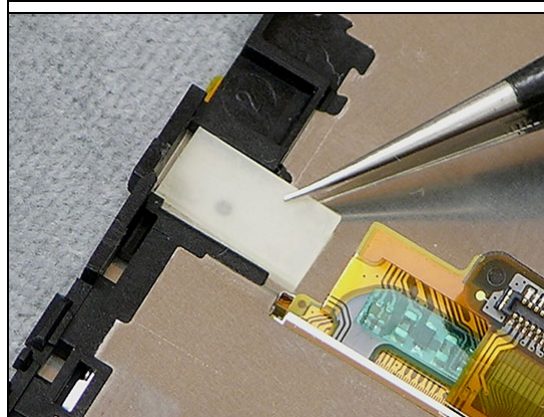
Follow the 2.1.1 – 2.1.6 Disassembly instructions

Use a pair of tweezers to remove the MComp Sheet B to B



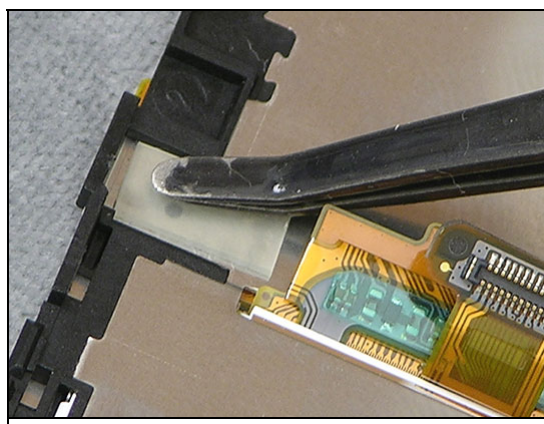
Installation

Use a pair of tweezers to position the MComp Sheet B to B



Use a pair of tweezers to attach the MComp Sheet B to B

Follow the 4.1.3 – 4.1.8 Reassembly instructions!



3.35 Cushion Microphone

Removal

Follow the 2.1.1 – 2.1.5 Disassembly instructions

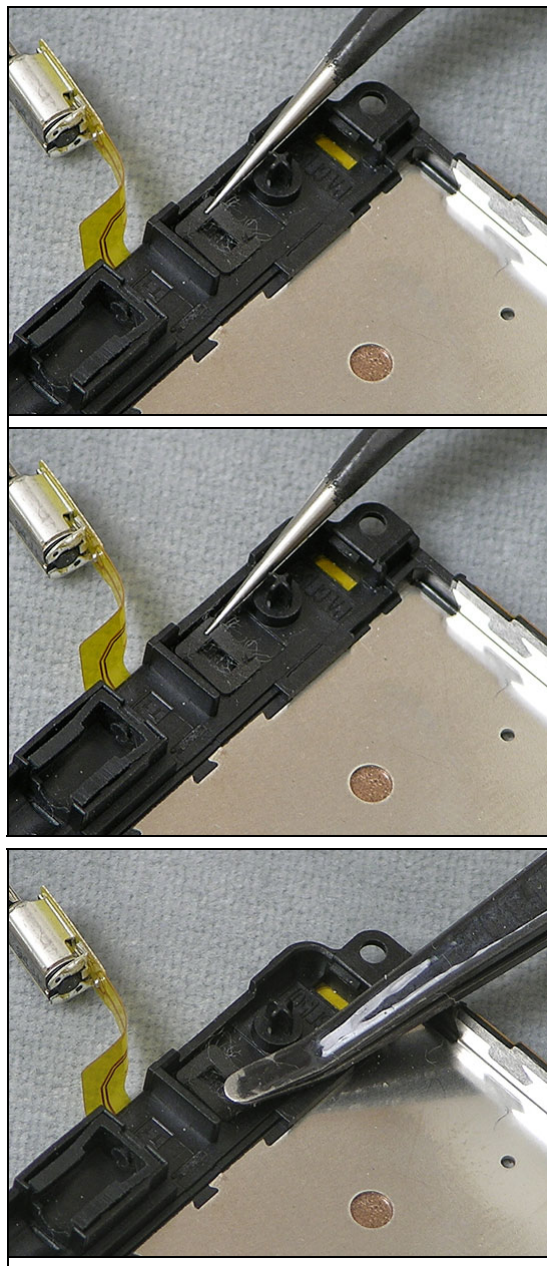
Use a pair of Tweezers to remove the Cushion Microphone

Installation

Use a pair of Tweezers to position the Cushion Microphone

Use a Flex Film Assembly Tool to attach the Cushion Microphone

Follow the 4.1.4 – 4.1.8 Reassembly instructions!



3.36 Grill Speaker

Removal

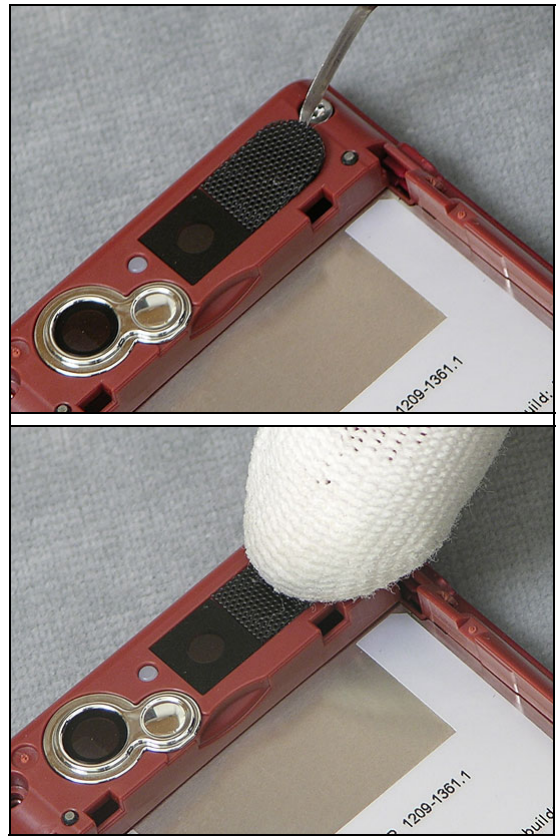
Follow the 2.1.1 Disassembly instructions

Use a Dentist Hook to remove the Grill Speaker

Installation

Use your fingers to attach the Grill Speaker

Follow the 4.1.8 Reassembly instructions!



3.37 Foil Adhesive Double Side 0.0 mmWindow Picture Light

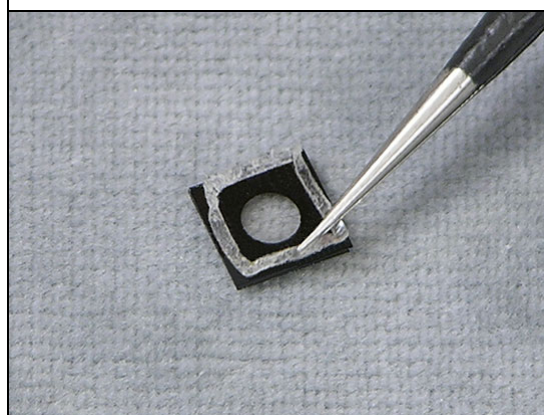
Removal

Follow the 2.1.1 Disassembly instructions

Use a Dentist Hook to remove the Window Other Picture Light

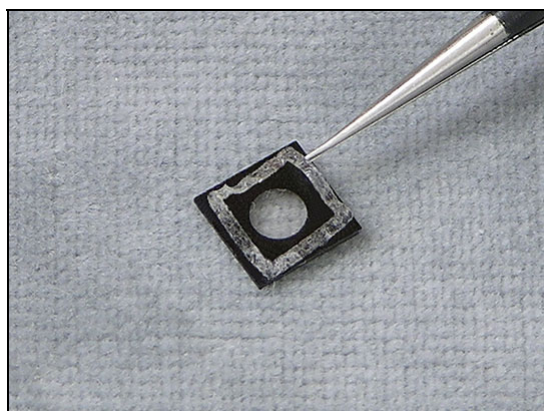


Use a pair of Tweezers to remove the Foil Adhesive Double Side 0.0 mmWindow Picture from the Window Other Picture Light

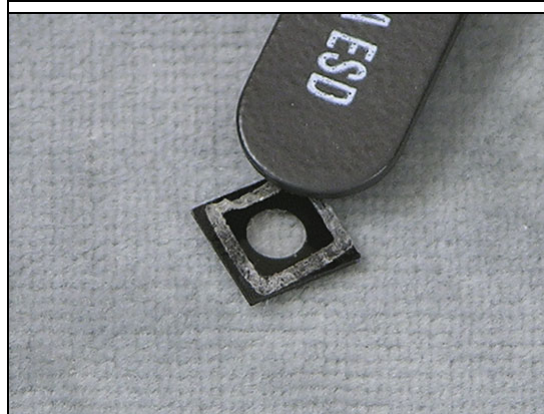


Installation

Use a pair of Tweezers to position the Foil Adhesive Double Side 0.0 mmWindow Picture from the Window Other Picture Light



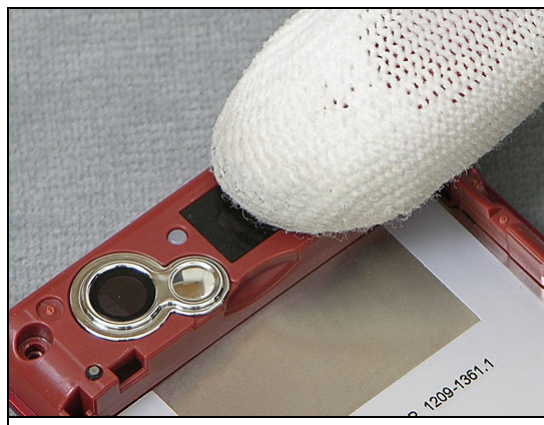
Use a pair of ESD Tweezers to attach the Foil Adhesive Double Side 0.0 mmWindow Picture from the Window Other Picture Light



Follow the 4.1.8 Reassembly instructions!

Use your fingers to attach the Window Other Picture light

Follow the 4.1.8 Reassembly instructions!



3.38 Window Other Picture Light

Removal

Follow the 2.1.1 Disassembly instructions

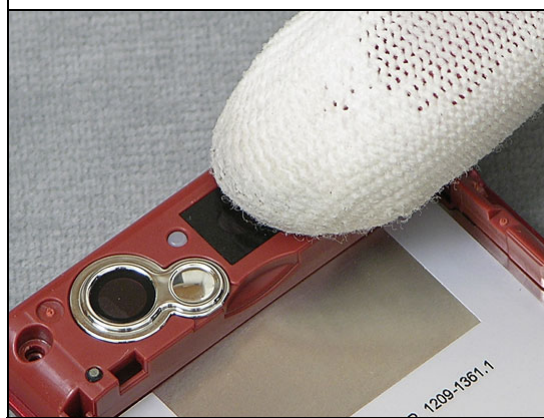
Use a Dentist Hook to remove the Window Other Picture Light



Installation

Use your fingers to attach the Window Other Picture light

Follow the 4.1.8 Reassembly instructions!



3.39 M2 Cover

Removal

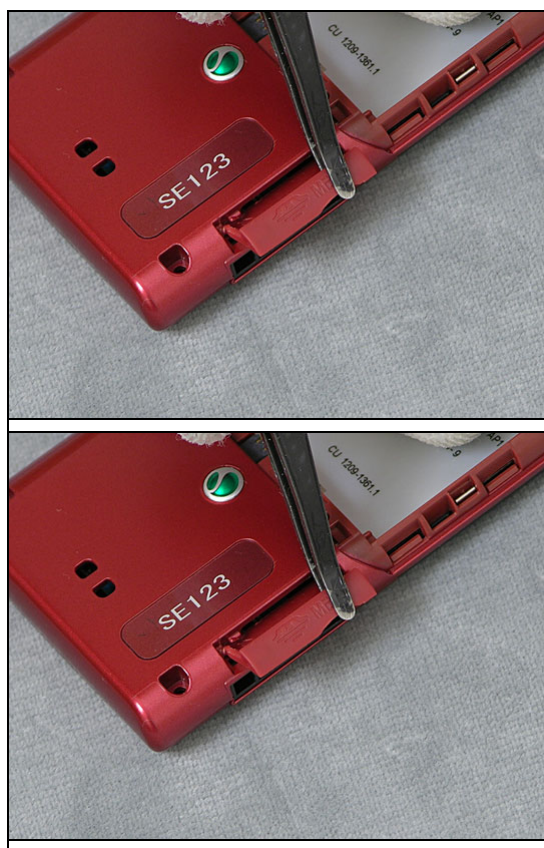
Follow the 2.1.1 – 2.1.3 Disassembly instructions

Use a Flex Film Assembly Tool to remove the M2 Cover

Installation

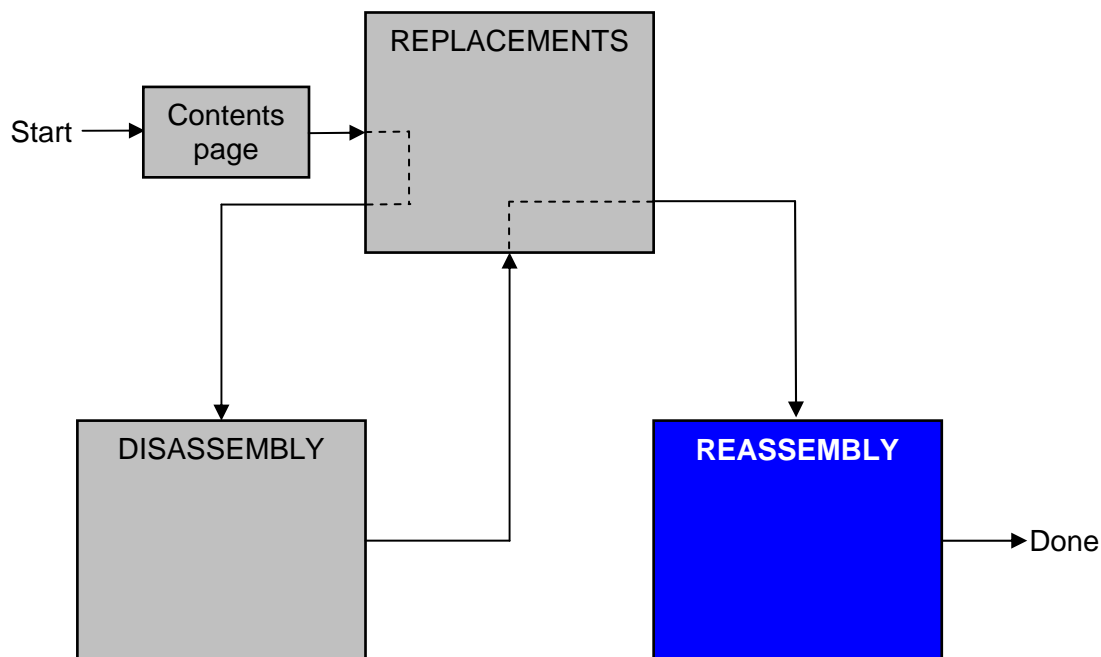
Use a Flex Film Assembly Tool to attach the M2 Cover

Follow the 4.1.6 – 4.1.8 Reassembly instructions!



4 Reassembly

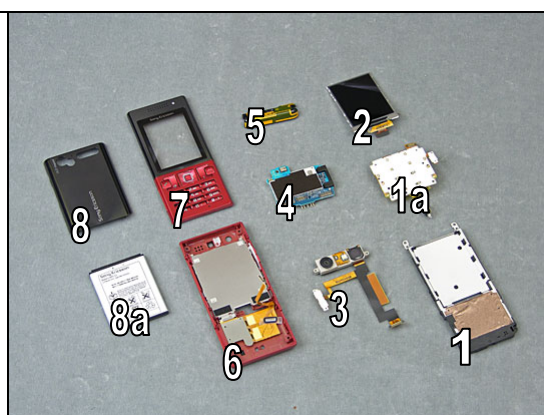
After replacing a part being listed in Replacements, the instruction of that section usually ends by directing you to this Reassembly section with a specification of the instructions you have to carry out in order to reassemble the phone.



4.1 Overview

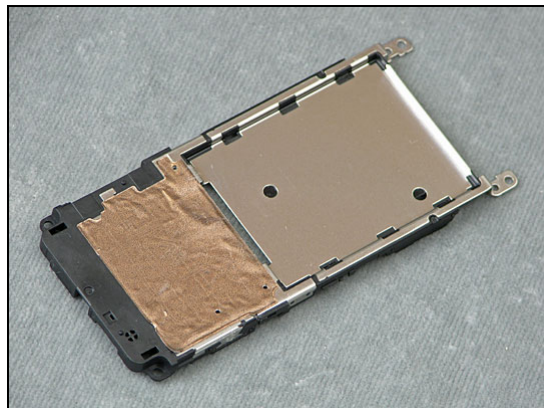
The reassembly is done in the following sequence:

1. Frame Sub Assembly PWB
- 1a. Key Flex Assembly
2. Display 2,02 A-SI TFT
3. Camera Flex Module
4. Main PWB
5. Ant Main PIFA
6. Cover Rear Sub Assembly
7. Front Assembly
8. Battery
- 8a. Cover Battery Sub Assembly

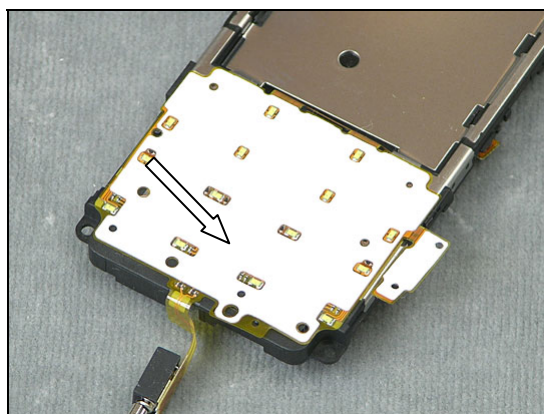


4.1.1 Frame Sub Assembly PWB and Key Flex Module

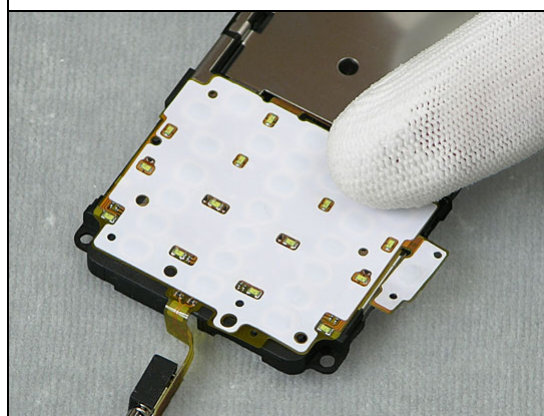
Use your fingers to place the Key Flex Module into the slot in the Frame Sub Assembly PWB.



Use your fingers to attach the Key Flex Module.

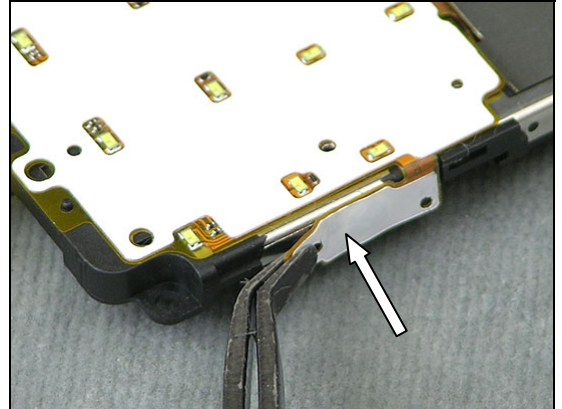


Use your fingers to attach the Key Flex Module.

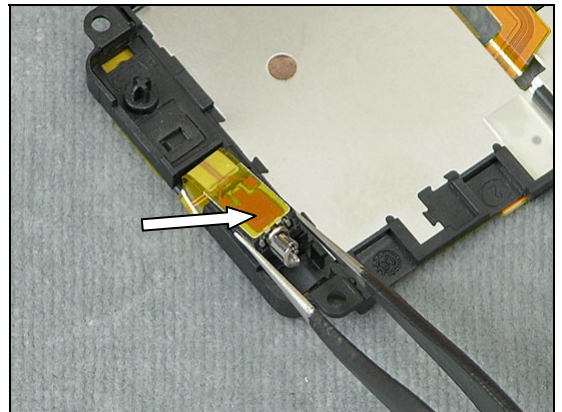


Replacements Instruction *continued*

Use a Flex Film Assembly Tool to attach the Camera Pad.

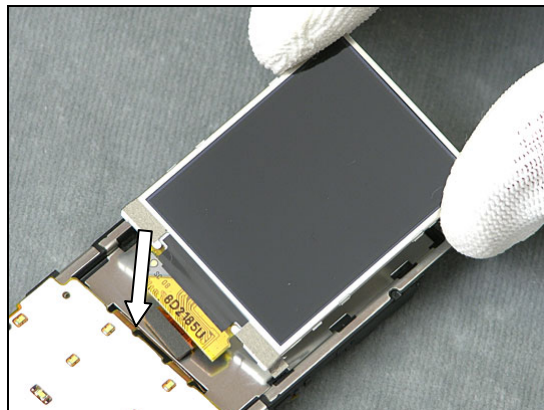


Use a pair of ESD Tweezers to attach the Vibrator.

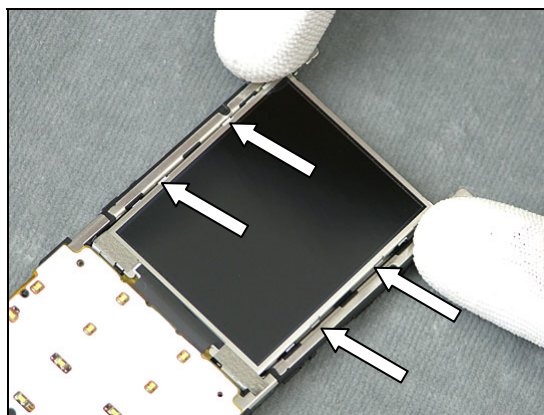


4.1.2 Display 2,02 A-SI TFT

Use your fingers to position the Display 2,02 A-SI TFT into the slot in the Frame Sub Assembly PWB.



Use your fingers to snap on the Display 2,02 A-SI TFT.

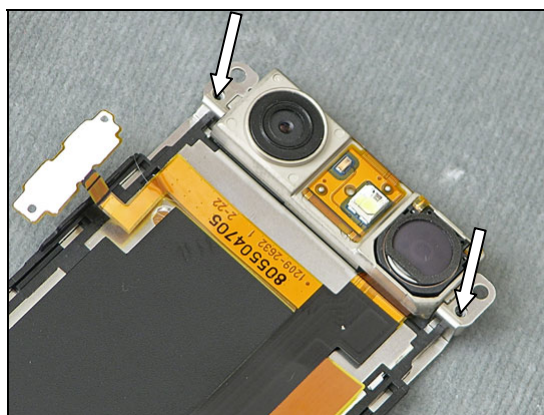


4.1.3 Camera Flex Module

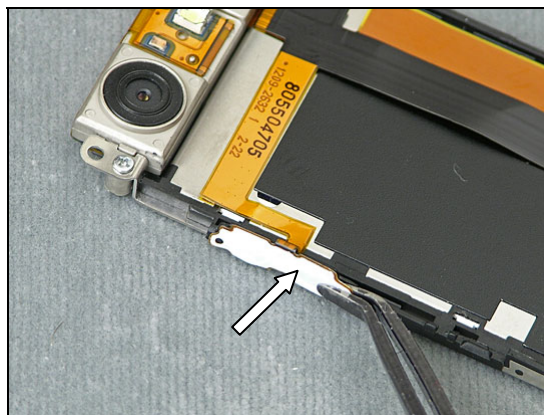
Use your fingers to position the Camera Flex Module.



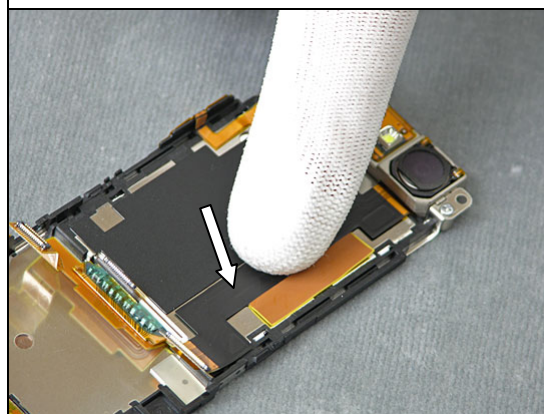
Use a Screwdriver (JCIS No.0 8Ncm) to tighten the two Screws. Other Len:3.5 Diam:1.4 M.



Use a Flex Film Assembly Tool to attach the Key Volume Pad.

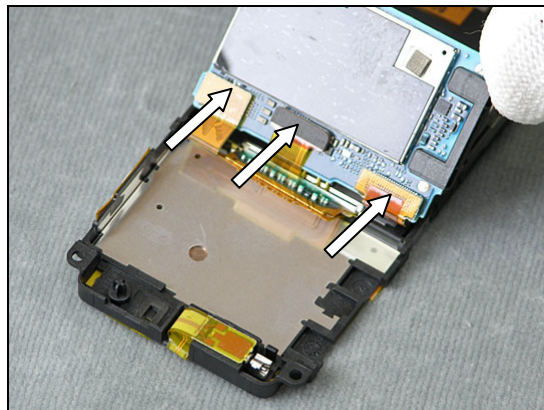


Use your fingers to attach the Camera Flex Module.

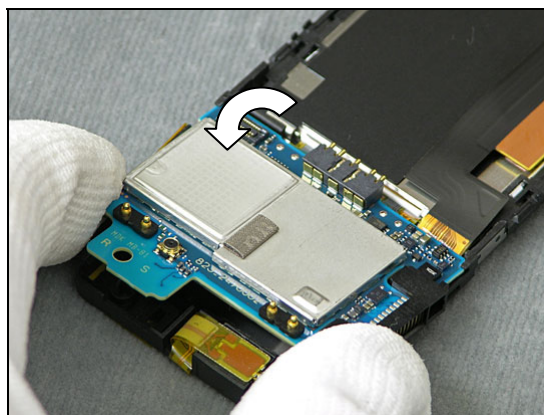


4.1.4 Frame PWB Sub Assembly

Use your fingers to connect the three BtB connectors with the Frame PWB Sub Assembly.



Use your fingers to flip over and position the Frame PWB Sub Assembly.

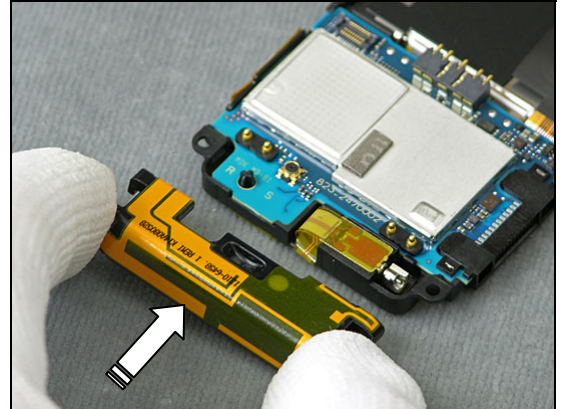


Use your fingers to snap on the Frame PWB Sub Assembly.

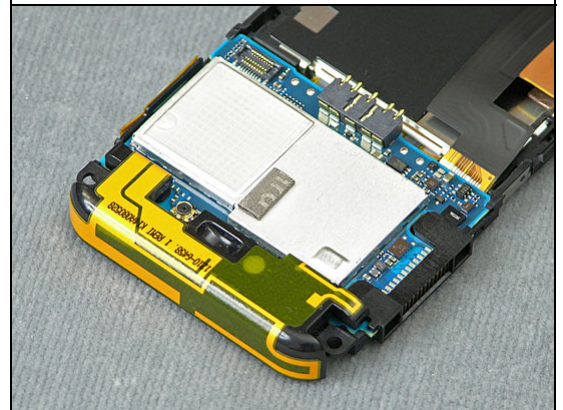


4.1.5 Ant Main PIFA

Use your fingers to place the Antenna Main PIFA.



Use your fingers to snap on the Antenna Main PIFA.

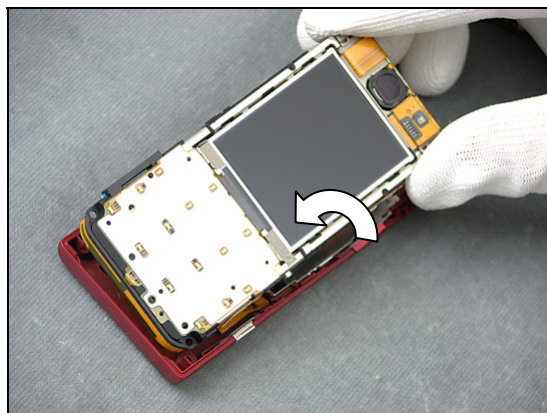


4.1.6 Cover Rear Sub Assembly

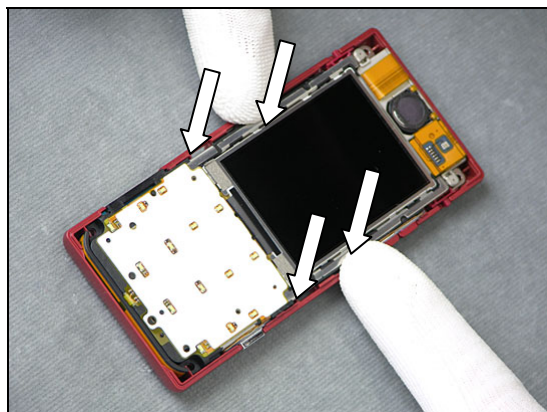
Use your fingers to attach the connector on the Rear Cover Assembly with the BtB connector on the Main PWB.



Use your fingers to position the Rear Cover Assembly.



Use your fingers to attach and snap on the Rear Cover Assembly.



4.1.7 Front Assembly

Use your finger to position the Front Assembly.



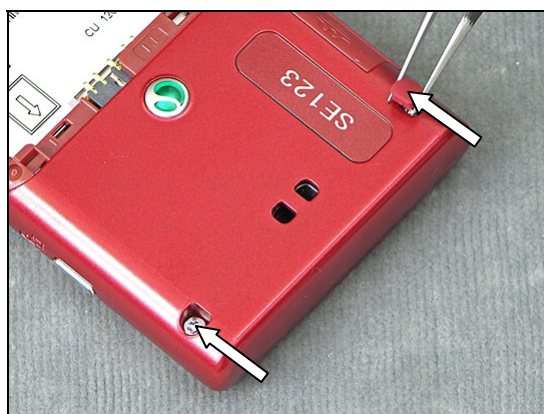
Use your fingers to snap on the Front Assembly.



Use a Screwdriver (Torx T6 18Ncm) to tighten the four Screw Other Len:5.0 Diam:1.7.



Use a pair of ESD Tweezers to position the two Cap Screws.



4.1.8 Battery & Cover Battery Sub Assembly

Use your fingers to attach the Battery.



Use your fingers to attach the Cover Battery Sub Assembly.



Use your fingers to lock the two locks on the side of the phone.





5 Revision history

Rev.	Date	Changes / Comments
1	2009-09-25	Initial release